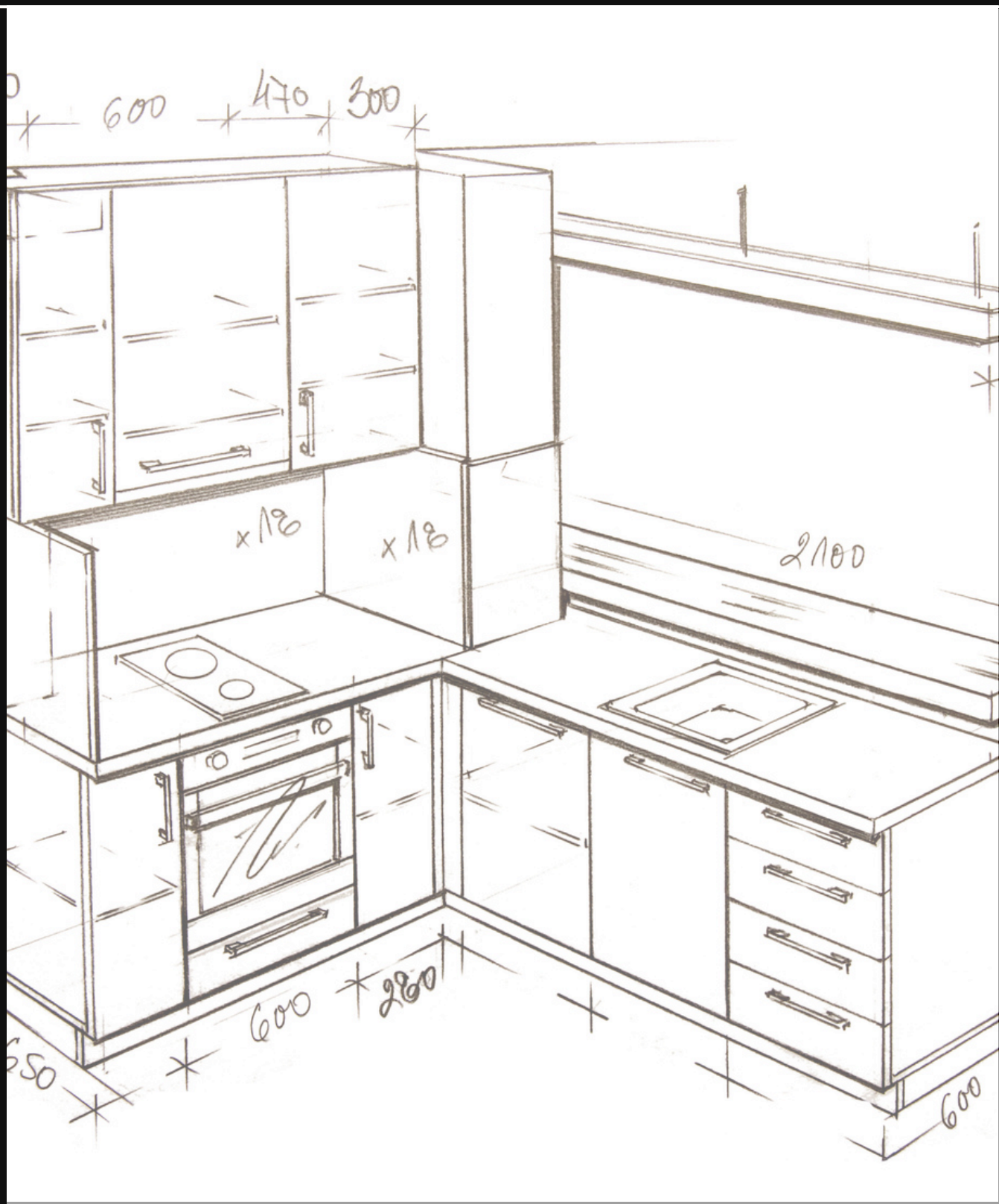


SPEC GUIDE

CENTURY CABINETS

CABINETRY YOU CAN COUNT ON







CONTENTS

1: ABOUT CENTURY CABINETS

2: HOW TO ORDER

3: FINISHING & COLORS

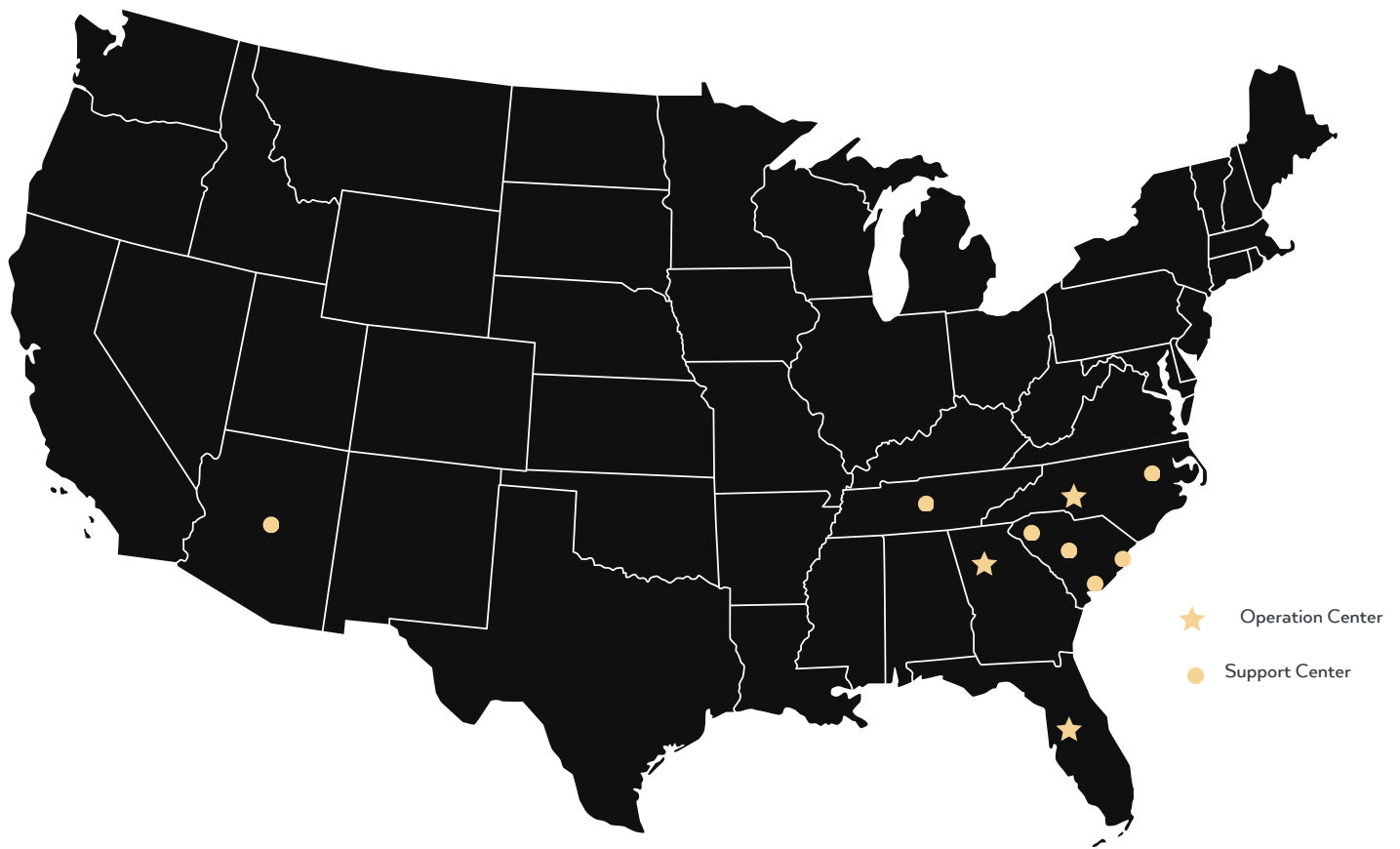
4: HIGHLIGHTED FEATURES

5: CABINET SPECIFICATIONS

- WALL
- BASE
- TALL
- VANITY
- ACCESSORIES

6: CABINET CARE

7: TERMS & CONDITIONS



ABOUT

Century Cabinets consists of a network of locations across the Southeast and Arizona, including major operation centers in Atlanta, GA, Charlotte, NC and Lakeland, FL. Our talented team of industry professionals work on a regional and national scale to create beautiful and functional spaces with quality cabinetry, unmatched customer service and shorter lead times.

Century Cabinets is part of the Edge Building Solutions family, a group of visionaries and craftspeople who provide specialty design-build solutions for residential and commercial properties. From staircases to cabinets, the Edge Building Solutions companies create solid structures that leave lasting impressions.

01

EDGEBUILDINGSOLUTIONS.COM

HOW TO ORDER

1. Complete order form provided by Century Cabinets representative with all required information.
2. Submit order by emailing a completed form to:
dealerorders@centurycabinetsinc.com.
3. An order confirmation will be emailed back within 48 hours of order submission.
4. Review order confirmation and submit any changes within 48 hours.
5. Lead time will be communicated to you by your Century Cabinets customer care agent.





03

IN-HOUSE FINISHING

Century Cabinets is proud to have an in-house finishing operation. Our team consists of industry experts that bring decades of knowledge and experience to the table ensuring our customers always get high quality paint finishes on their cabinet orders. This also gives Century Cabinets the ability to be nimble and responsive to the market and overall cabinet trends. As trends change, we can adapt more quickly than other cabinet manufacturers and suppliers.

Our Process

1. Prep Sanding. All cabinet parts are sanded through with an automated sander and then followed by a detailed hand sanding for above average adhesion.
2. Priming. Through our automated paint flat line with a multi-stack drying oven, cabinets are covered in Sherwin Williams catalyzed primer 4-5 wet mils per coat per side. Note, all cabinets are sanded day of finishing for optimal adhesion.
3. Prime Sanding. Repeat step 1 before final finishing.
4. Finishing. Cabinets are covered in Sherwin Williams conversion varnish 4-5 wet mils per coat per side. Note, all cabinets are sanded day of finishing for optimal adhesion.
5. Full Inspection. Following the final finishing session, all cabinets undergo a thorough quality control inspection.

FINISHING & COLORS

Century
Signature Colors



Century White



Century Gray



Licorice

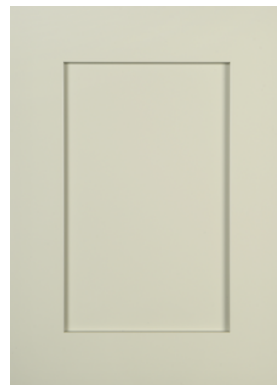
Sherwin Williams
Colors



Steamed
Milk
(SW 7554)



Perfect
Greige
(SW 6073)



Chatroom
(SW 6171)



Jade
Dragon
(SW 9129)



Upward
(SW 6239)



Gale Force
(SW 7605)

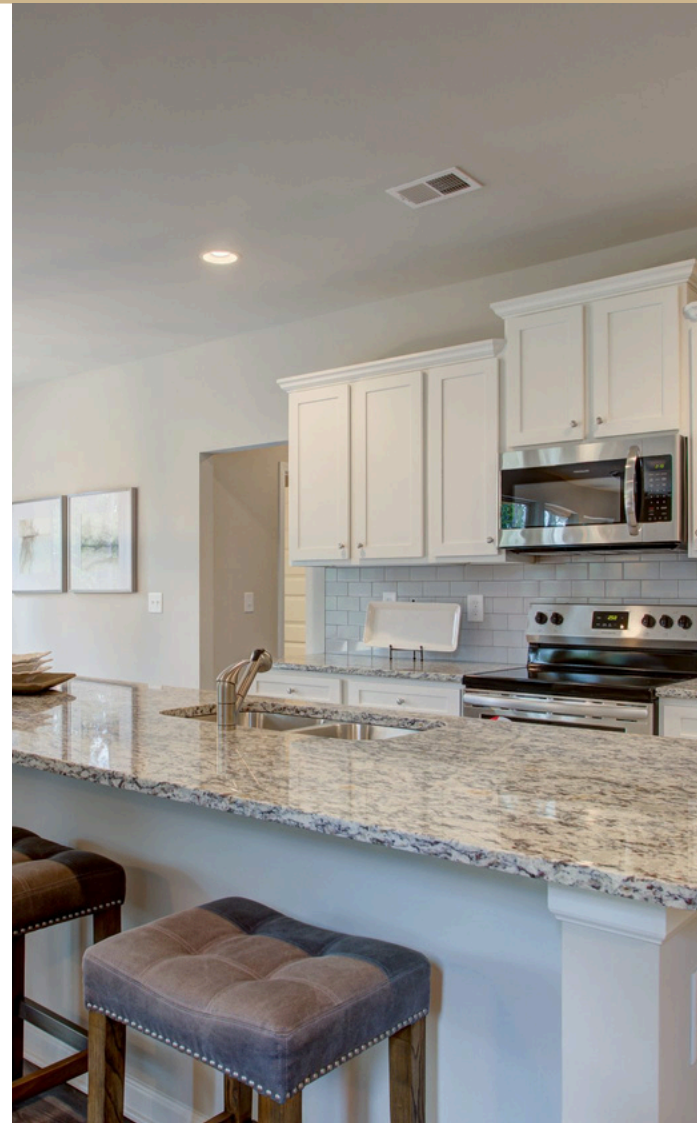


Urbane
Bronze
(SW 7048)

FEATURES

- Highly Preferred Shaker Door Style
- Adult Height Vanities
- 75 lb Side Mount Epoxy Coated Drawer Guides - Dual Captured
- Adjustable Drawer Guide Boots
- 4-Sided Plywood Drawer Box
- 5-Piece Drawer Head

- 6-Way Adjustable Concealed Hinges with Soft Close Feature
- CARB Certified 1/2" Furniture Board Cabinet Box
- Solid Wood Front Frames
- 30", 36" and 42" Wall Cabinets
- Assembled
- KCMA Certified
- Upgrade Available - Undermount Soft-Close, Full Extension Feature





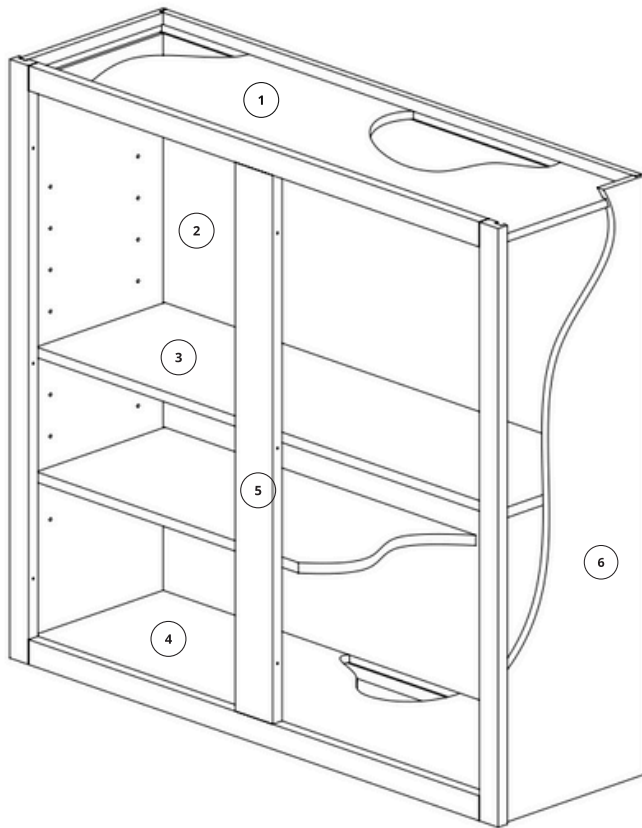
SPECIFICATIONS

All cabinets supplied by Century Cabinets are constructed out of CARB certified $\frac{1}{2}$ " furniture board with front frames made of solid wood. The six-way adjustable concealed hinges come with the soft close feature and four-sided plywood drawers.

Wall cabinet sizes are available in 30", 36", and 42", with all cabinet vanities being adult-height. When partnering with our team, you are guaranteed to be provided with comprehensive cabinet solutions for kitchens, bathrooms, and other spaces with our focused, yet expansive offerings.



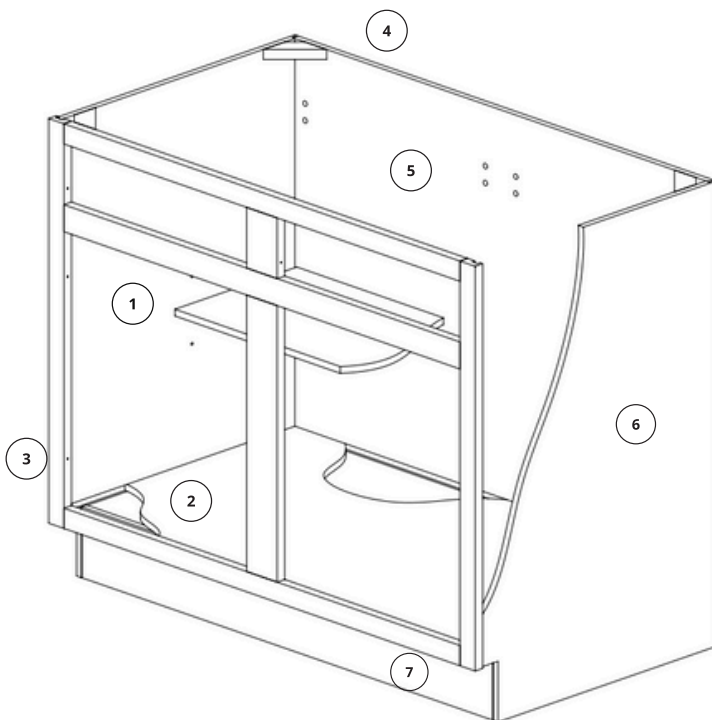
CABINET CONSTRUCTION



WALL CABINETS

- ① 1/2" laminated furniture board top
- ② 1/2" laminated furniture board back
- ③ 5/8" laminated furniture board adjustable shelf with locking clips
- ④ 1/2" laminated furniture board bottom
- ⑤ 1-1/2" x 3/4" solid hardwood face frame mortise and tenon and glued
- ⑥ 1/2" laminated furniture board sides

****White will have matching interior. All other colors will have natural maple interior.**

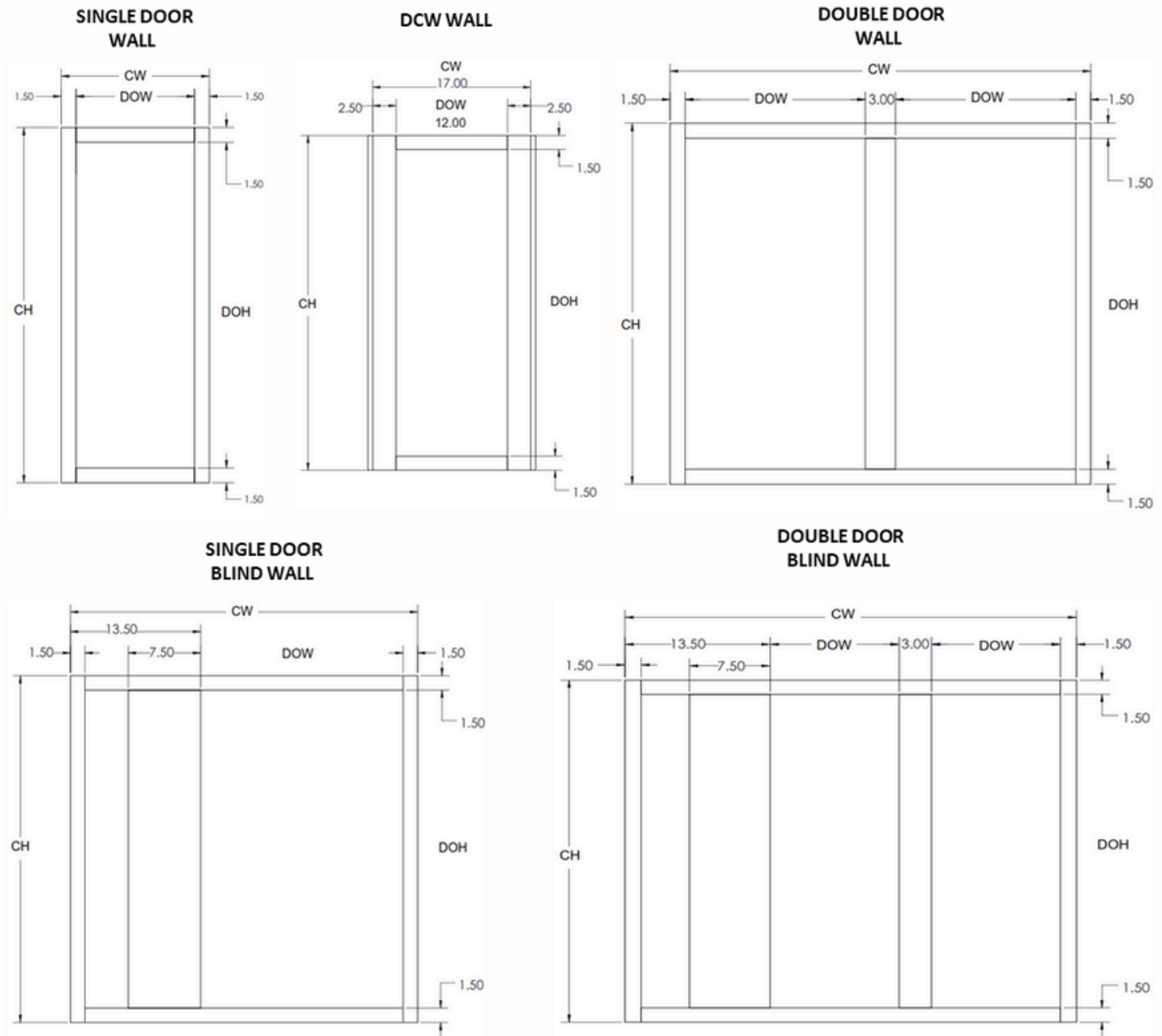


BASE CABINETS

- ① 5/8" laminated furniture board adjustable shelf with locking clips
- ② 1/2" laminated furniture board bottom
- ③ 1-1/2" x 3/4" solid hardwood face frame mortise and tenon and glued
- ④ High impact plastic corner braces
- ⑤ 1/2" laminated furniture board back
- ⑥ 1/2" laminated furniture board sides
- ⑦ 4-1/2" H x 3" toe kick cut-out with 1/2" laminated furniture board

****White will have matching interior. All other colors will have natural maple interior.**

WALL CABINET FRONT FRAME



WALL CABINET FRONT FRAME INSTRUCTIONS

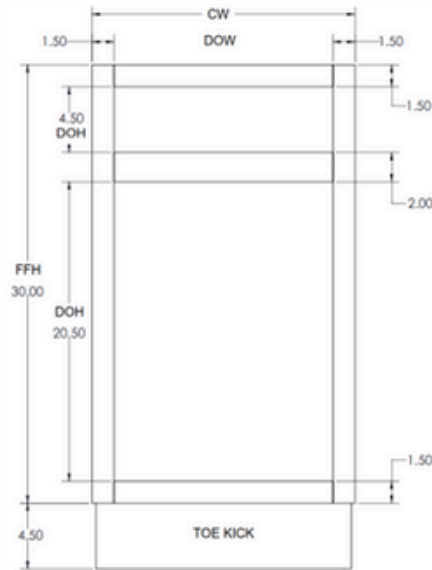
ID	DESCRIPTION	CABINET TYPE	CABINET OPENING FORMULA
CW	Cabinet Width	ALL	Width From Cabinet ID
CH	Cabinet Height	ALL	Height From Cabinet ID
DOW	Door Opening Width	Single Door	$CW - 3" = DOW$
	Door Opening Width	Double Butt Door	$CW - 3" = DOW$ (For 2 Doors)
	Door Opening Width	Double Door w/Post	$(CW - 6") / 2 = DOW$
	Door Opening Width	Single Door Blind	$CW - 15" = DOW$
	Door Opening Width	Double Door Blind	$(CW - 18") / 2 = DOW$
DOH	Door Opening Height	ALL	$CH - 3" = DOH$

BASE CABINET FRONT FRAME

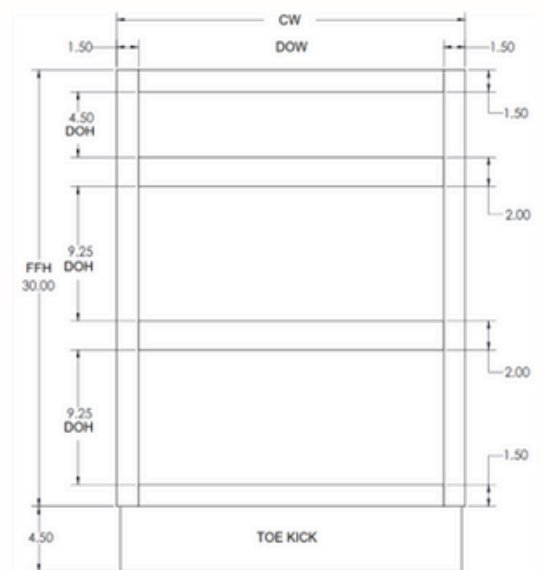
**SINGLE FULL HEIGHT
BASE DOOR**



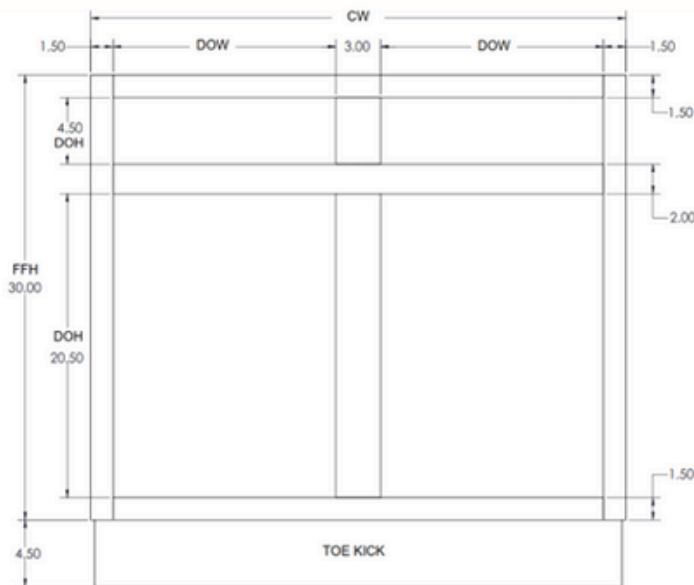
**DRAWER & DOOR BASE
BUTT DOOR BASE**



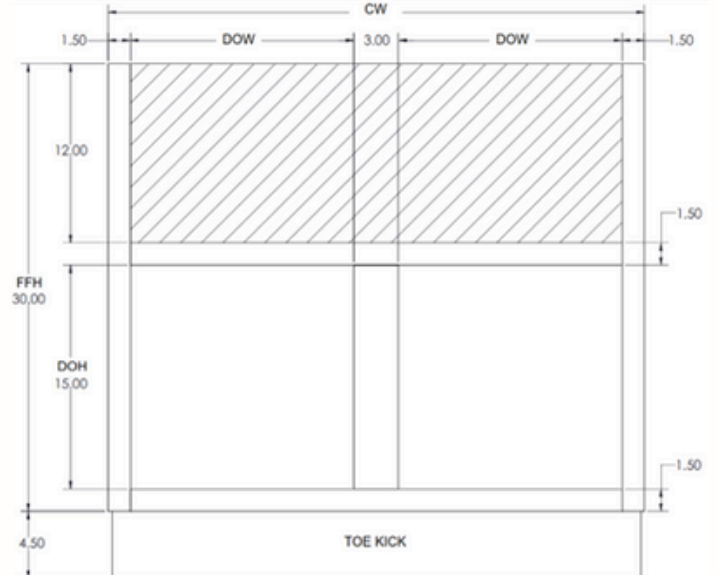
3 DRAWER BASE



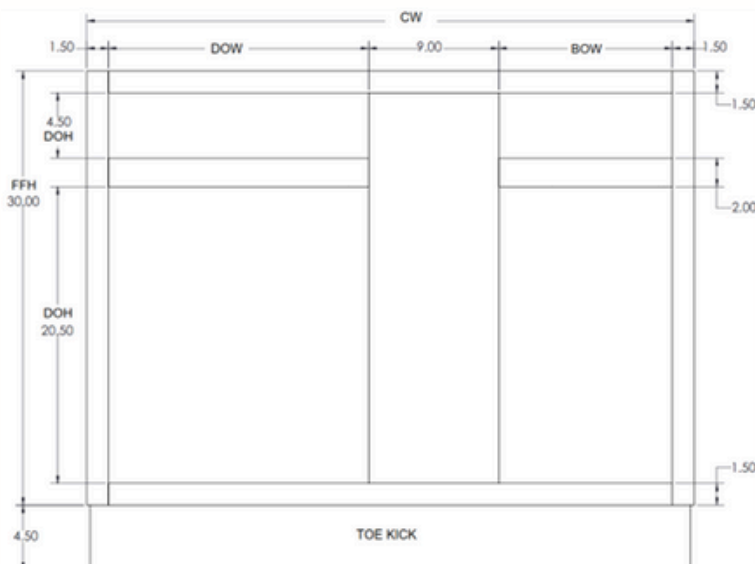
DOUBLE DRAWER & DOOR BASE



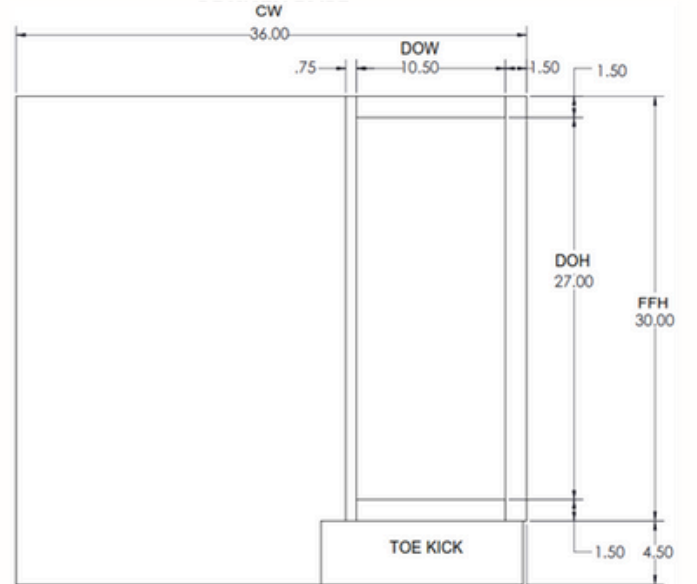
DOUBLE DOOR FARM SINK BASE



BLIND BASE

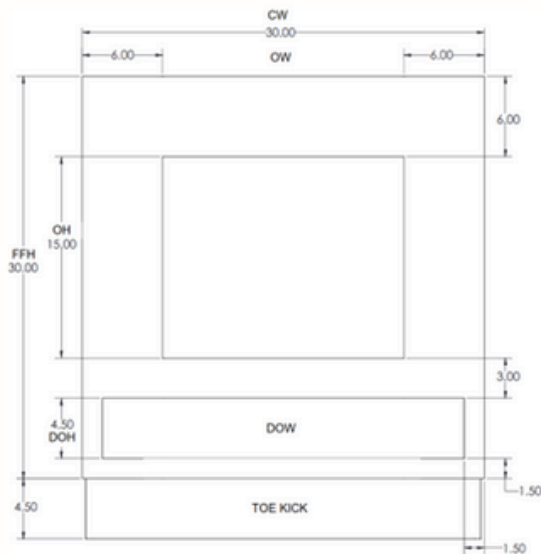


CORNER BASE



BASE CABINET FRONT FRAME

MICROWAVE BASE

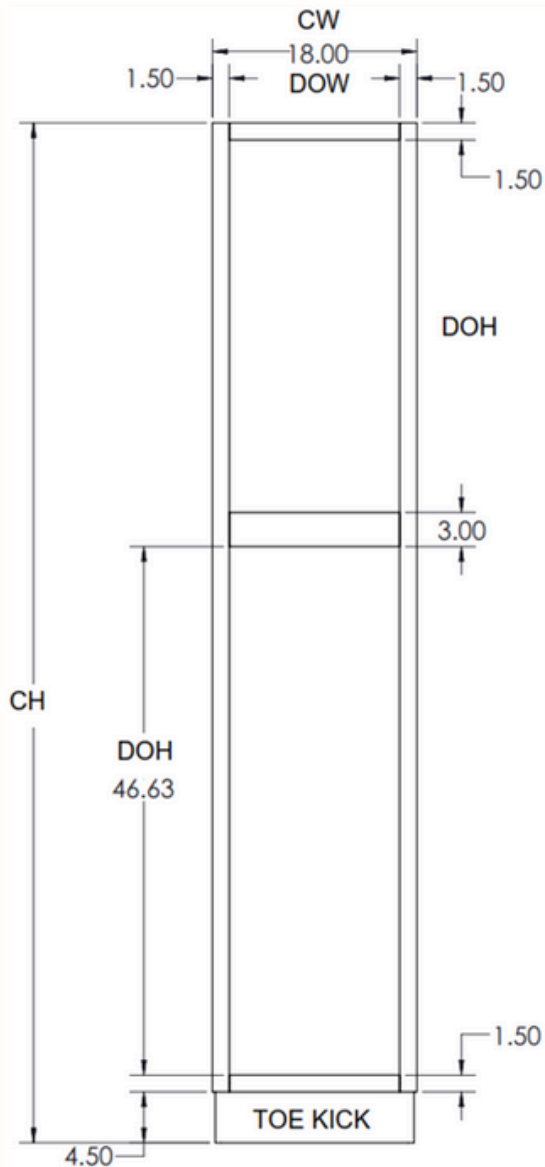


BASE CABINET FRONT FRAME INSTRUCTIONS

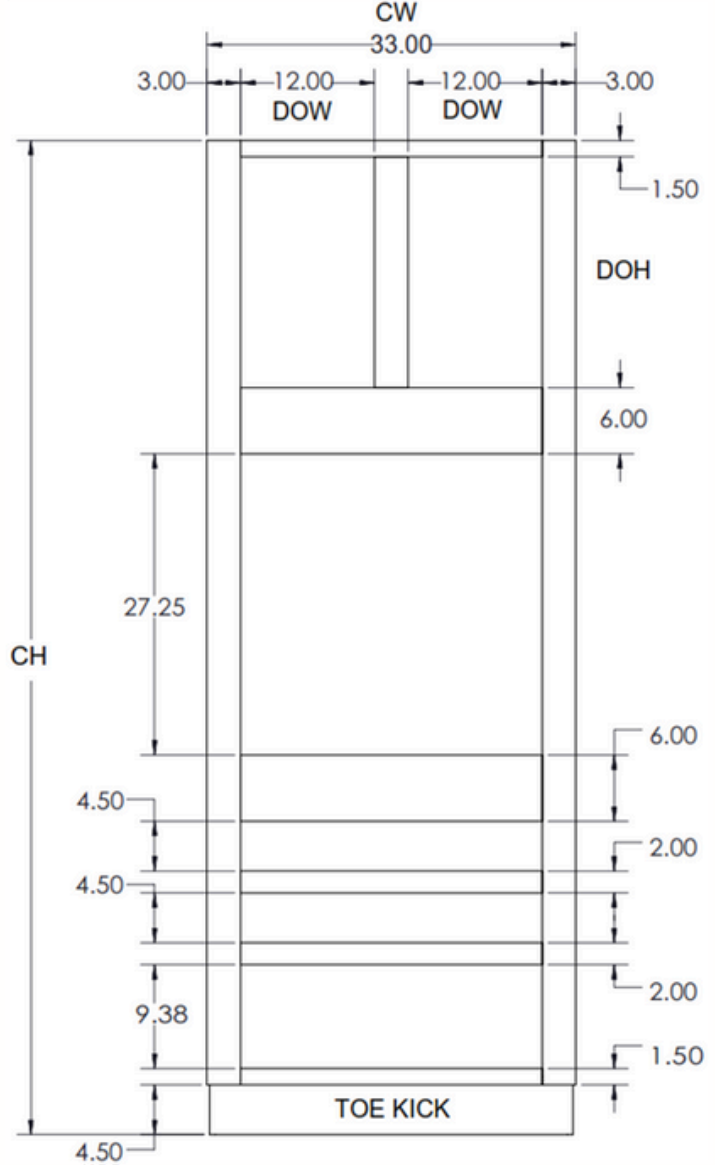
ID	DESCRIPTION	CABINET TYPE	CABINET OPENING FORMULA
CW	Cabinet Width	ALL	Width From Cabinet ID
CH	Cabinet Height	ALL	FFH + Toe Kick
FFH	Front Frame Height	ALL	CH minus Toe Kick
DOW	Door (Drawer) Opening Width	Single Door	$CW - 3" = DOW$
	Door (Drawer) Opening Width	Double Butt Door	$CW - 3" = DOW$ (For 2 Doors)
	Door (Drawer) Opening Width	Double Door w/Post	$(CW - 6") / 2 = DOW$
	Door (Drawer) Opening Width	Single Door Blind	$CW - 30" = DOW$ (BBC36: $CW - 24" = DOW$)
DOH	Door Opening Height	Door and Drawer Base	$CH - 14" = DOH$
	Door Opening Height	Full Height Door Base	$CH - 7.5" = DOH$
	Door Opening Height	Blind Corner Base	$CH - 14" = DOH$

TALL CABINET FRONT FRAME

UTILITY/PANTRY
SINGLE DOOR



OVEN
DOUBLE DOOR



TALL CABINET FRONT FRAME INSTRUCTIONS

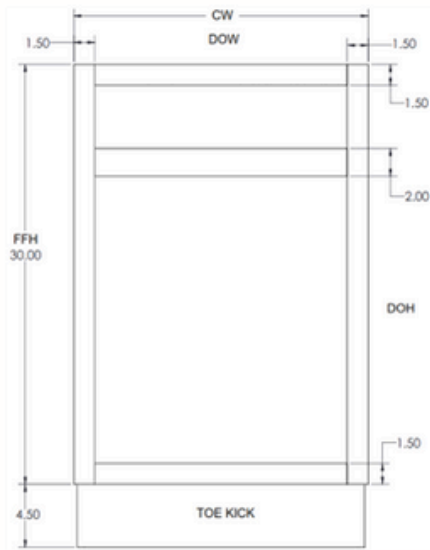
ID	DESCRIPTION	CABINET TYPE	CABINET OPENING FORMULA
CW	Cabinet Width	ALL	Width From Cabinet ID
CH	Cabinet Height	ALL	Height From Cabinet ID
FFE	Cabinet Height	ALL	CH minus Toe Kick
DOW	Door Opening Width	Single Door	$CW - 3" = DOW$
DOH	Door Opening Height	ALL	$CH - 57.13" = DOH$

OVEN CABINET FRONT FRAME INSTRUCTIONS

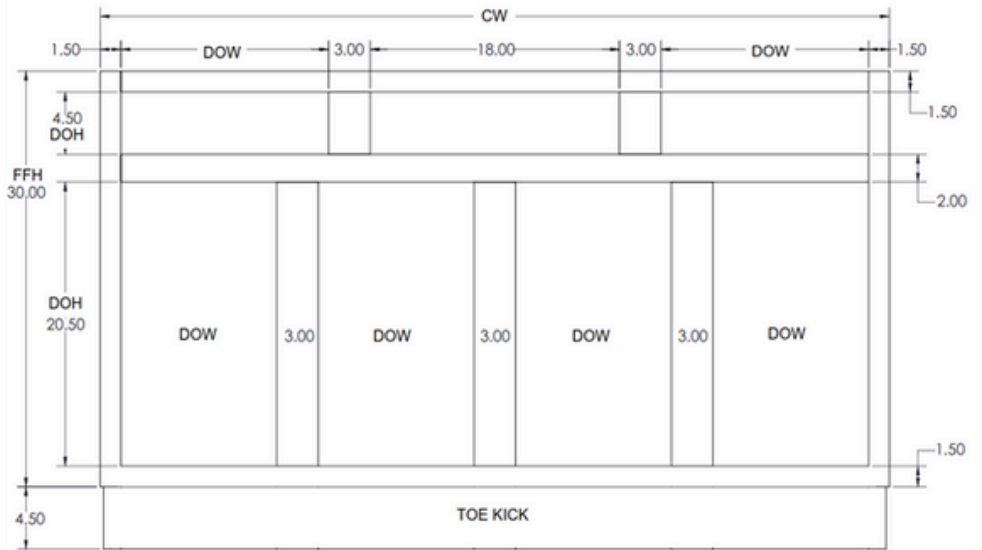
ID	DESCRIPTION	CABINET TYPE	CABINET OPENING FORMULA
CW	Cabinet Width	ALL	Width From Cabinet ID
CH	Cabinet Height	ALL	Height From Cabinet ID
FFE	Cabinet Height	ALL	CH minus Toe Kick
DOW	Door Opening Width	Double Door	$(CW - 9") / 2 = DOW$
DOH	Door Opening Height	ALL	$CH - 64.63" = DOH$

VANITY CABINET FRONT FRAME

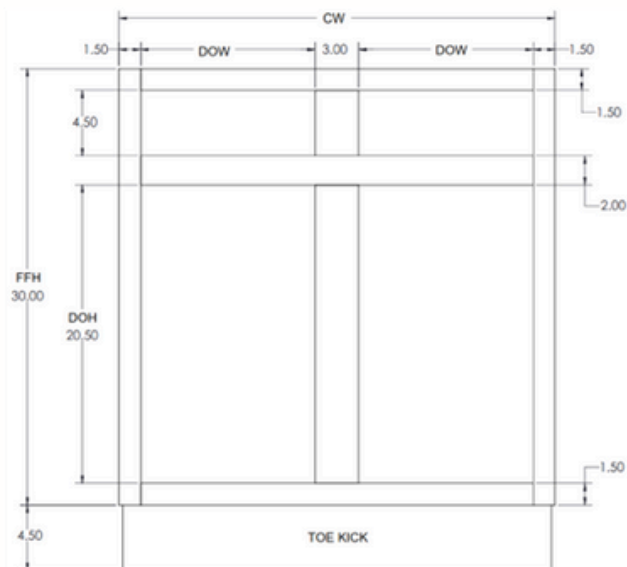
SINGLE DRAWER & DOOR



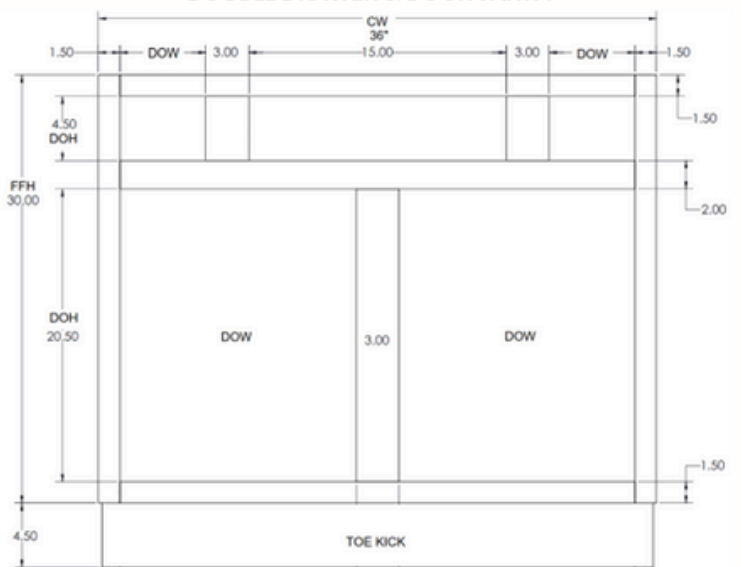
**VSD57 & VSD60
TWO DOUBLE DOOR & DOUBLE DRAWERS**



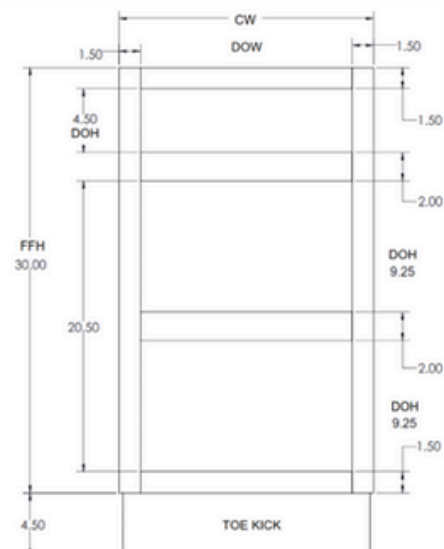
DOUBLE DOOR



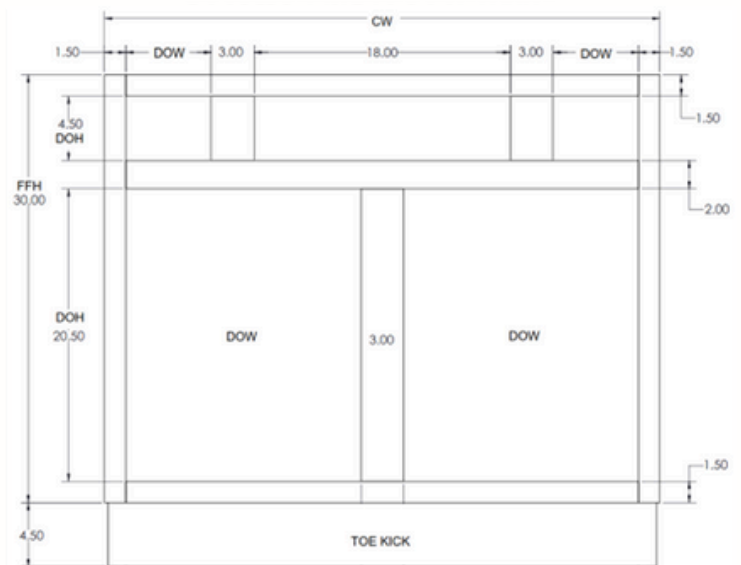
**VSD36
DOUBLE DRAWER & DOOR VANITY**



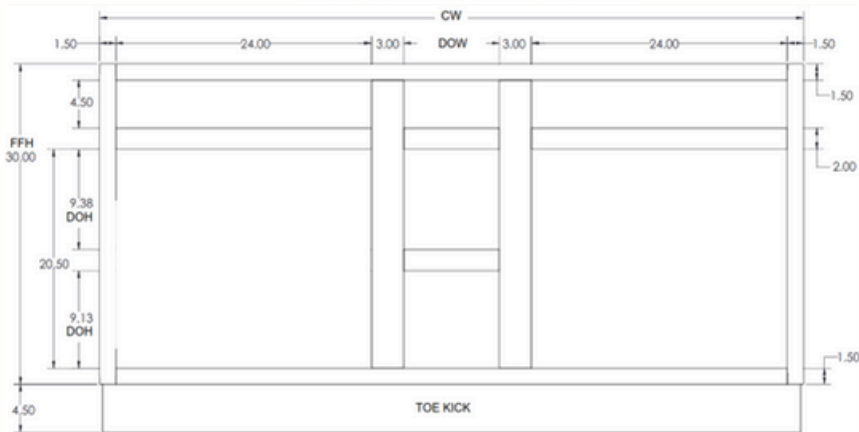
3 DRAWER VANITY



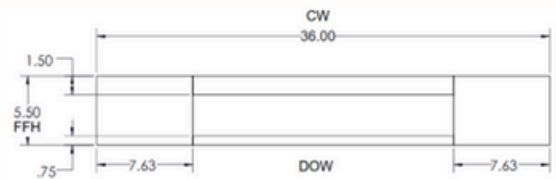
DOUBLE DRAWER & DOOR VANITY



VSD66 & VSD72
TWO DOUBLE DOOR & 3 DRAWER



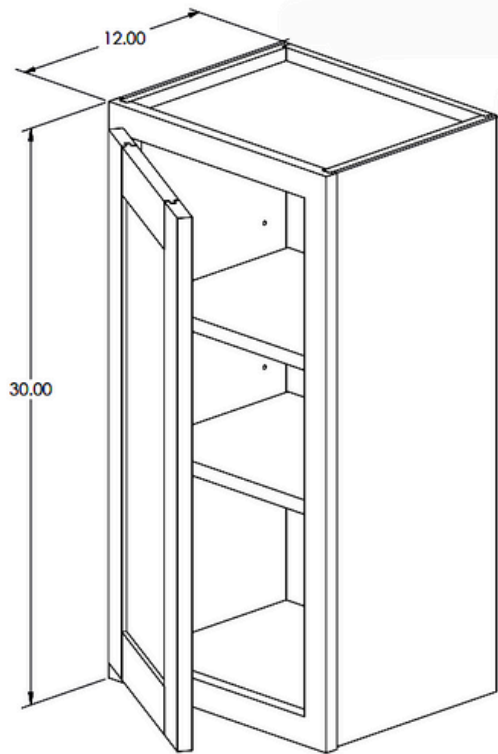
VANITY KNEE DRAWER



VANITY CABINET FRONT FRAME INSTRUCTIONS			
ID	DESCRIPTION	CABINET TYPE	CABINET OPENING FORMULA
CW	Cabinet Width	ALL	Width From Cabinet ID
CH	Cabinet Height	ALL	FFH + Toe Kick
FFH	Front Frame Height	ALL	CH minus Toe Kick
DOW	Door (Drawer) Opening Width	Single Door	CW - 3" = DOW
	Door (Drawer) Opening Width	Double Butt Door	CW - 3" = DOW (For 2 Doors)
	Door (Drawer) Opening Width	Double Door w/Post	(CW -6") / 2 = DOW
	Drawer Opening Width	Double Door & Drawers	(CW -27") /2 = DOW (VSD36: CW - 24" = DOW)
DOH	Door Opening Height	Door and Drawer Base	CH - 14" =DOH
	Door Opening Height	Full Height Door Base	CH - 7.5" =DOH
	Door Opening Height	Blind Corner Base	CH - 14" =DOH

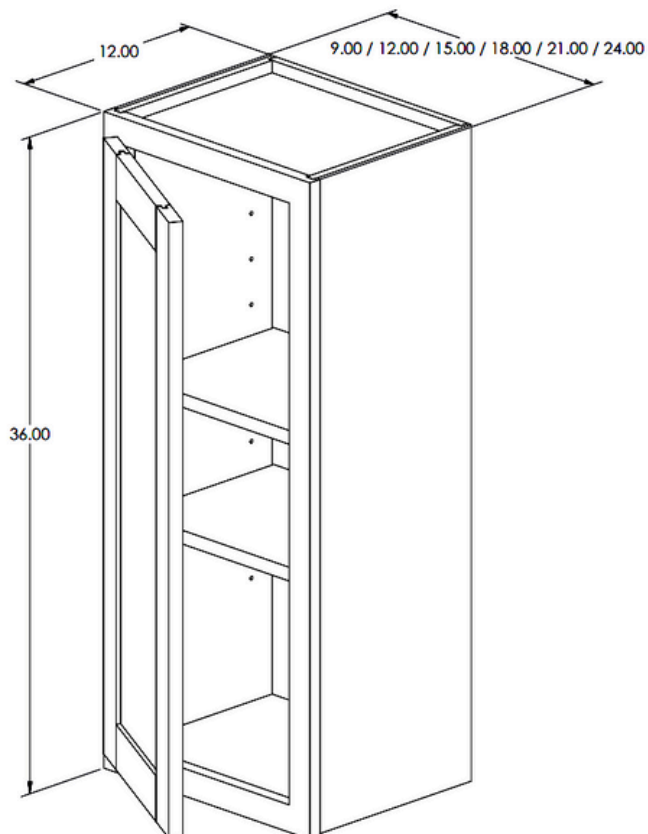
WALL CABINETS





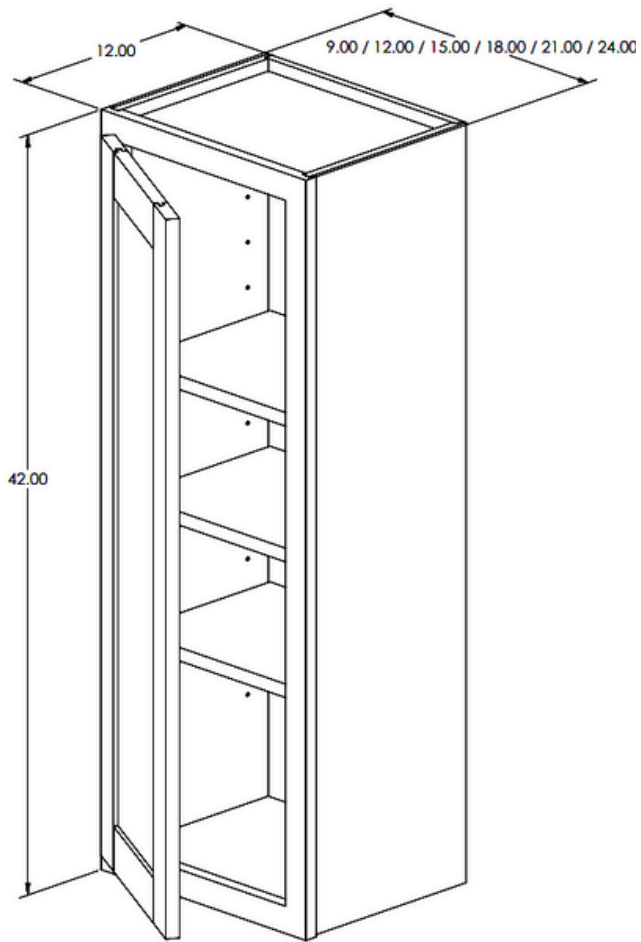
Single Door
30" Height

ITEM #
W0930
W1230
W1530
W1830
W2130
W2430



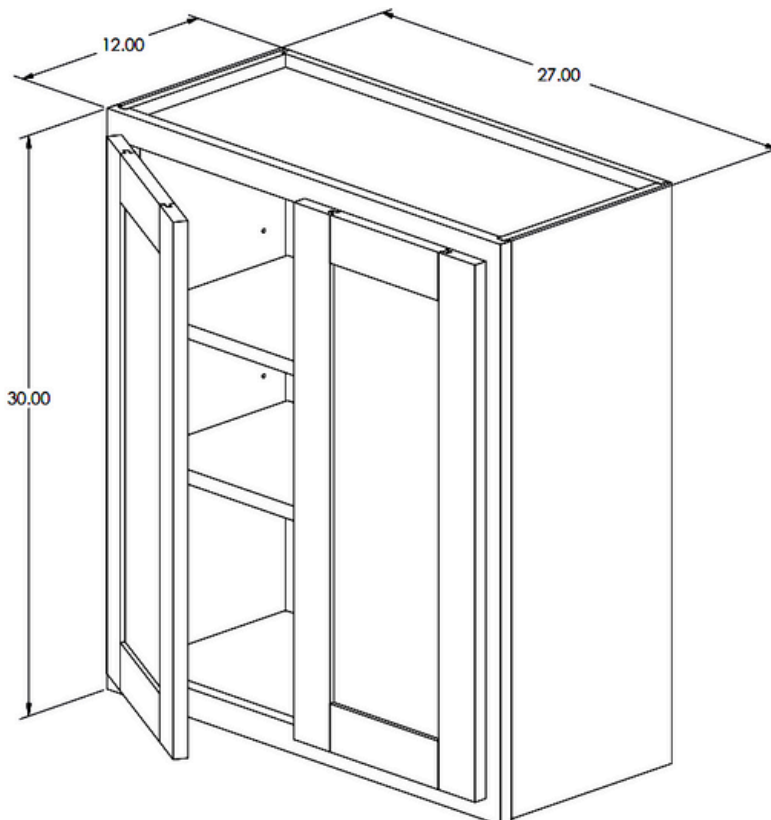
Single Door
36" Height

ITEM #
W0936
W1236
W1536
W1836
W2136
W2436



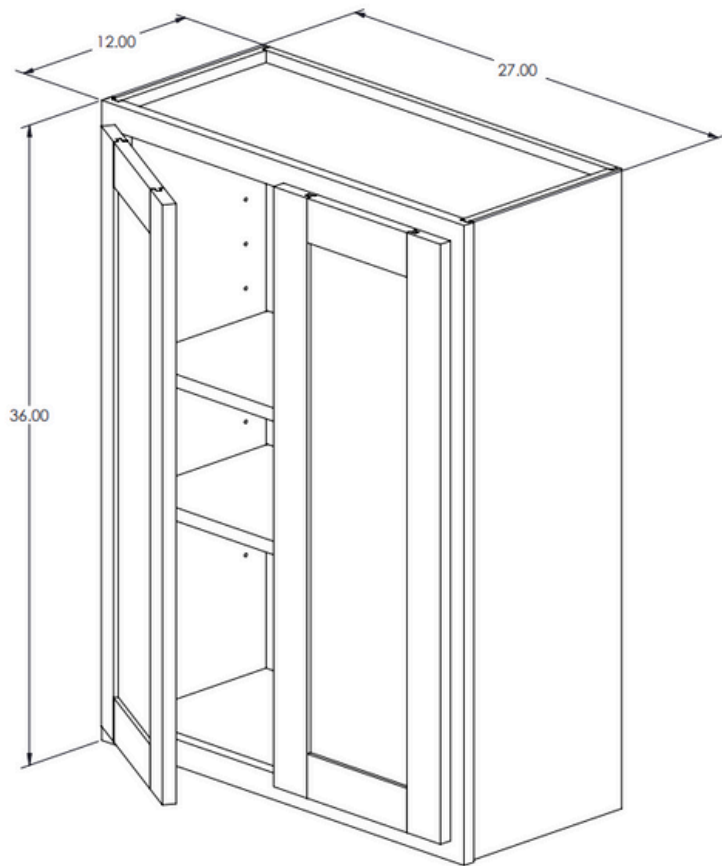
Single Door
42" Height

ITEM #
W0942
W1242
W1542
W1842
W2142
W2442



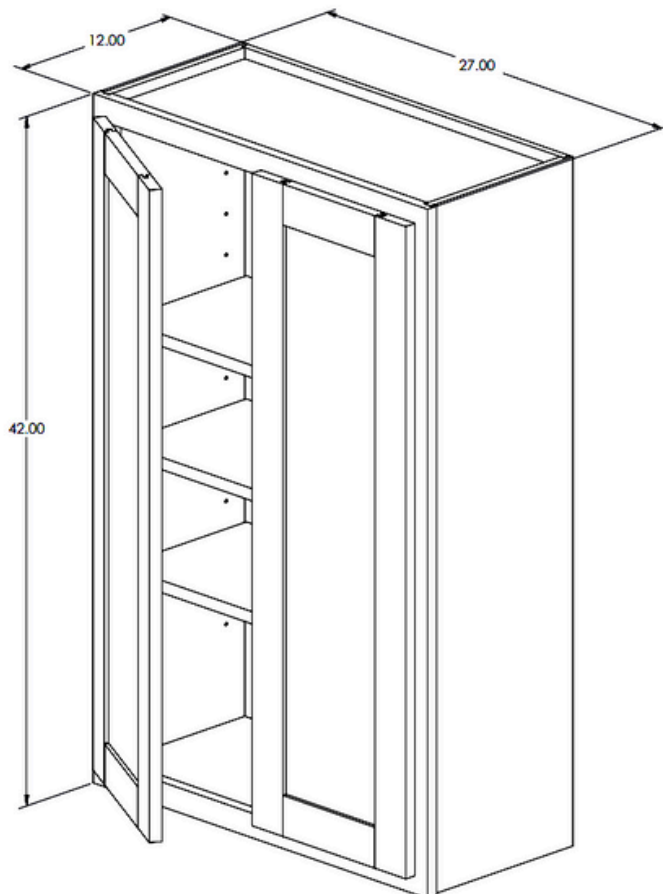
Butt Door
30" Height

ITEM #
W2730BD



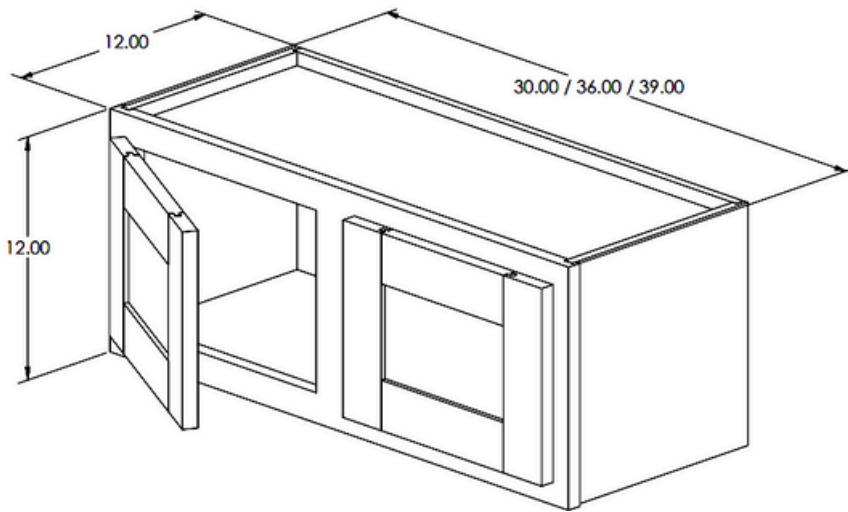
Butt Door
36" Height

ITEM #
W2736BD



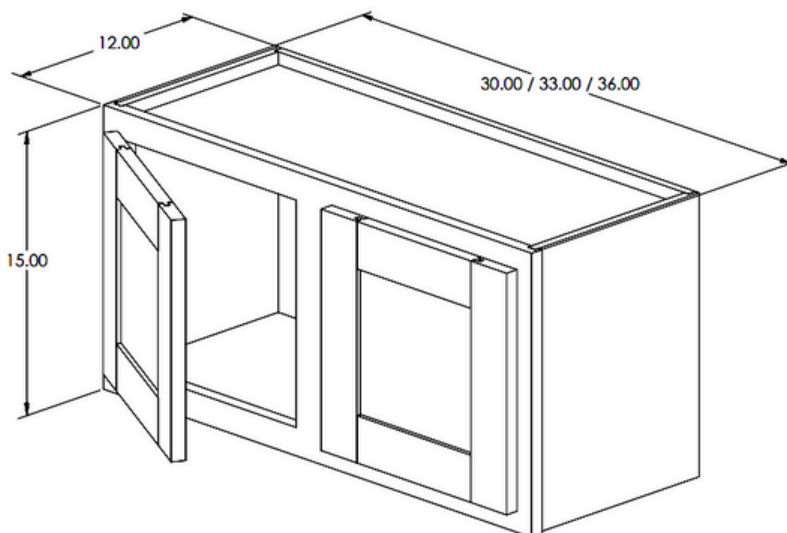
Butt Door
42" Height

ITEM #
W2742BD



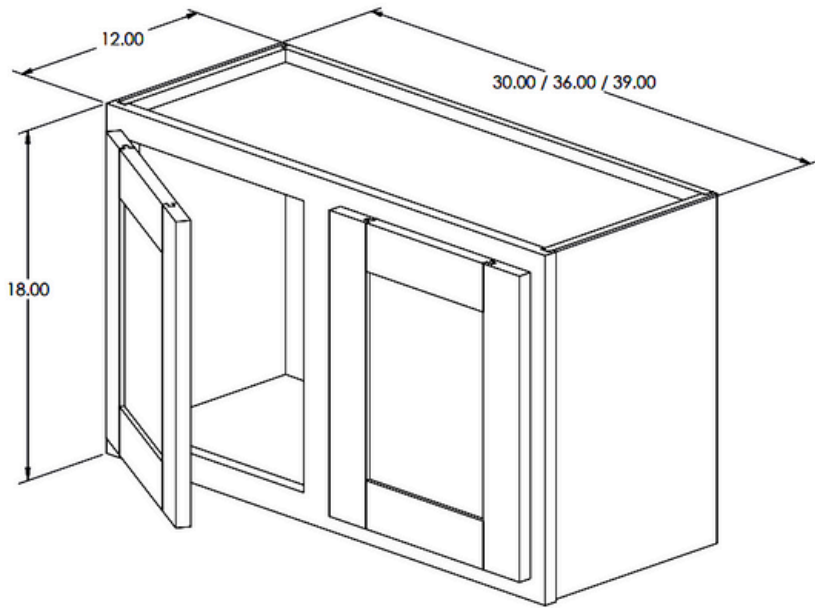
Double Door
12" Height

ITEM #
W3012
W3612
W3912



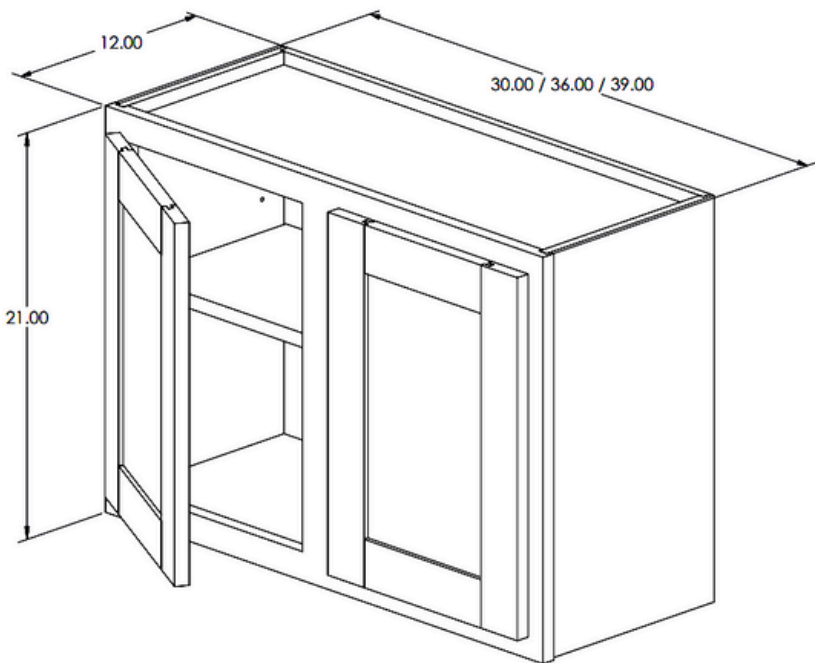
Double Door
15" Height

ITEM #
W3015
W3315
W3615



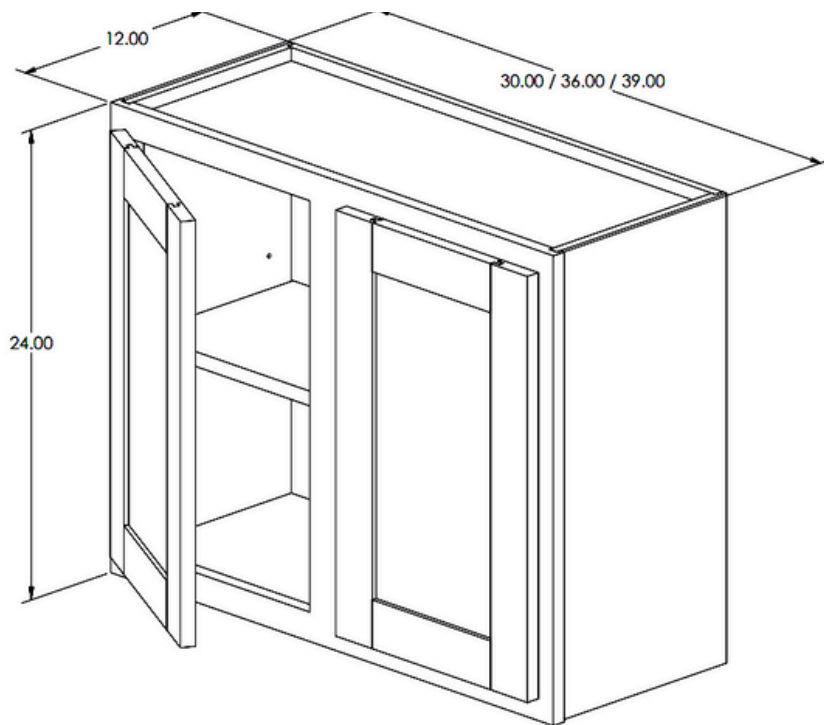
Double Door
18" Height

ITEM #
W3018
W3618
W3918



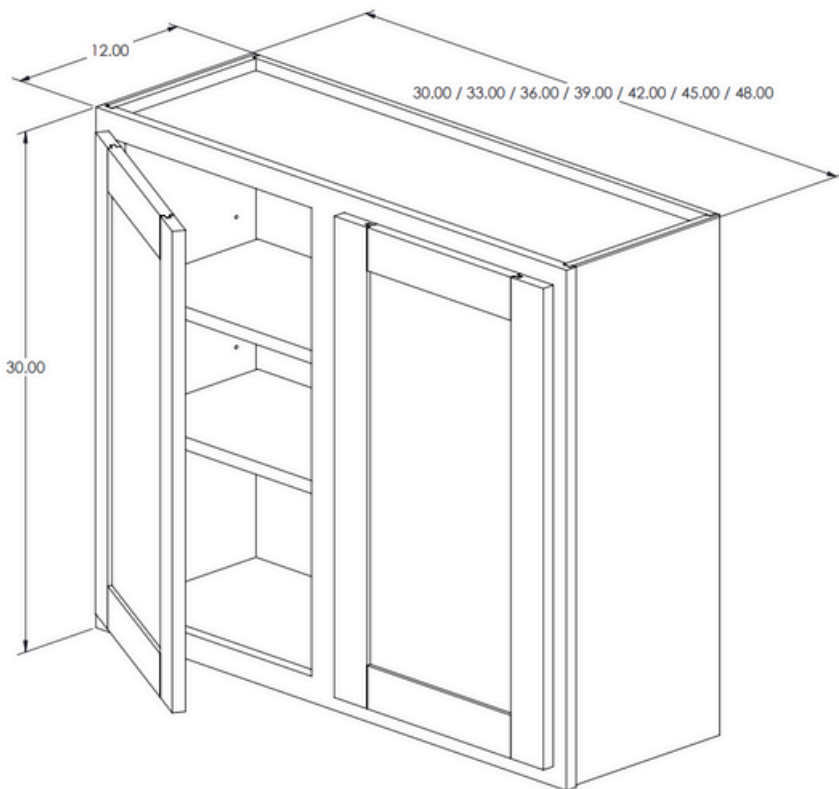
Double Door
21" Height

ITEM #
W3021
W3621
W3921



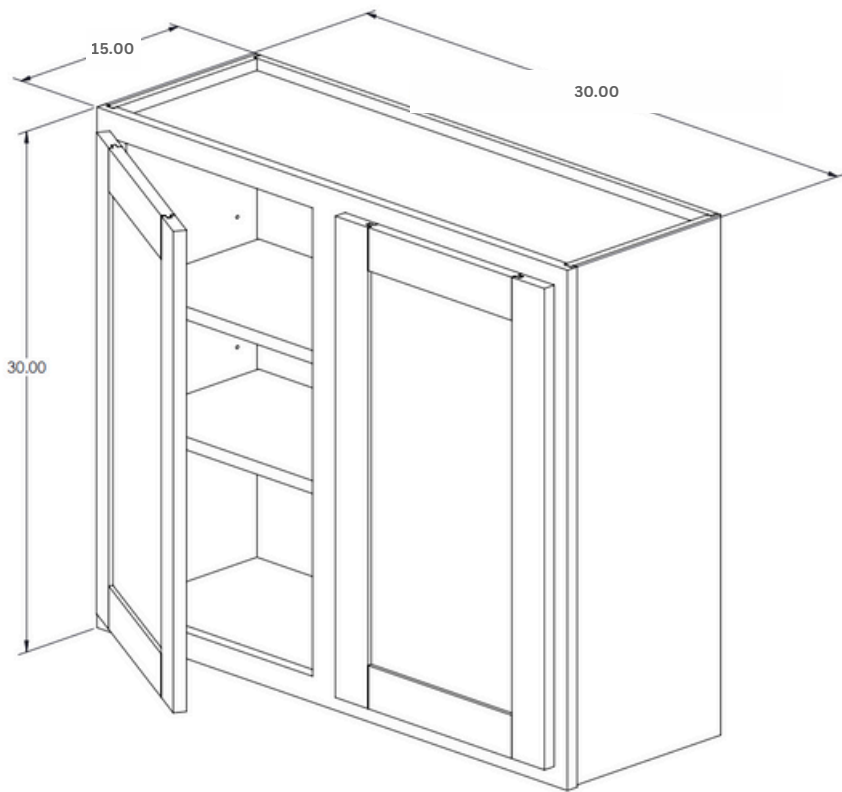
Double Door
24" Height

ITEM #
W3024
W3624
W3924



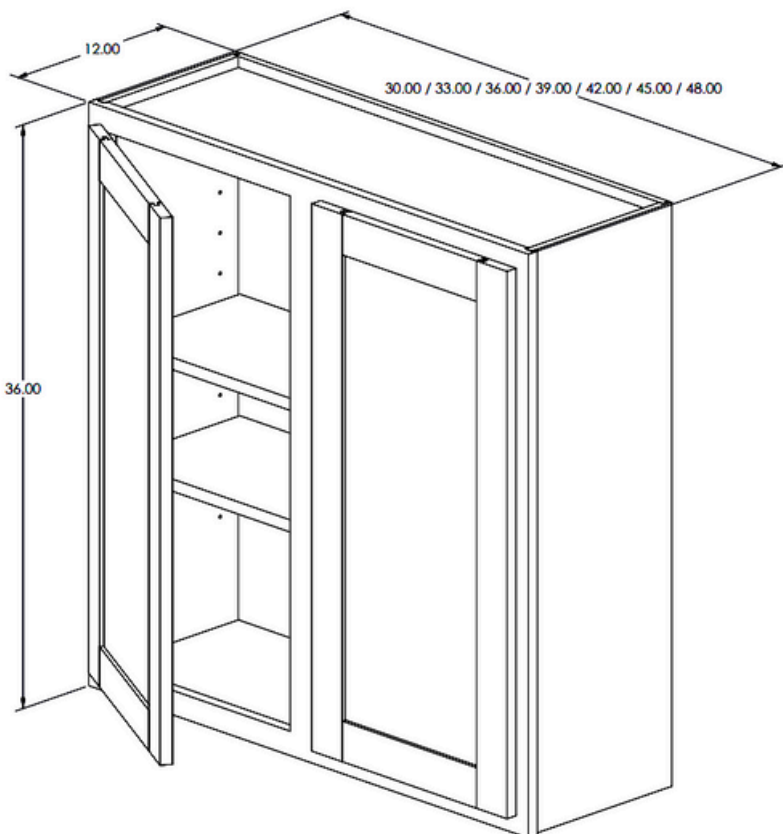
Double Door
30" Height

ITEM #
W3030
W3330
W3630
W3930
W4230
W4530
W4830



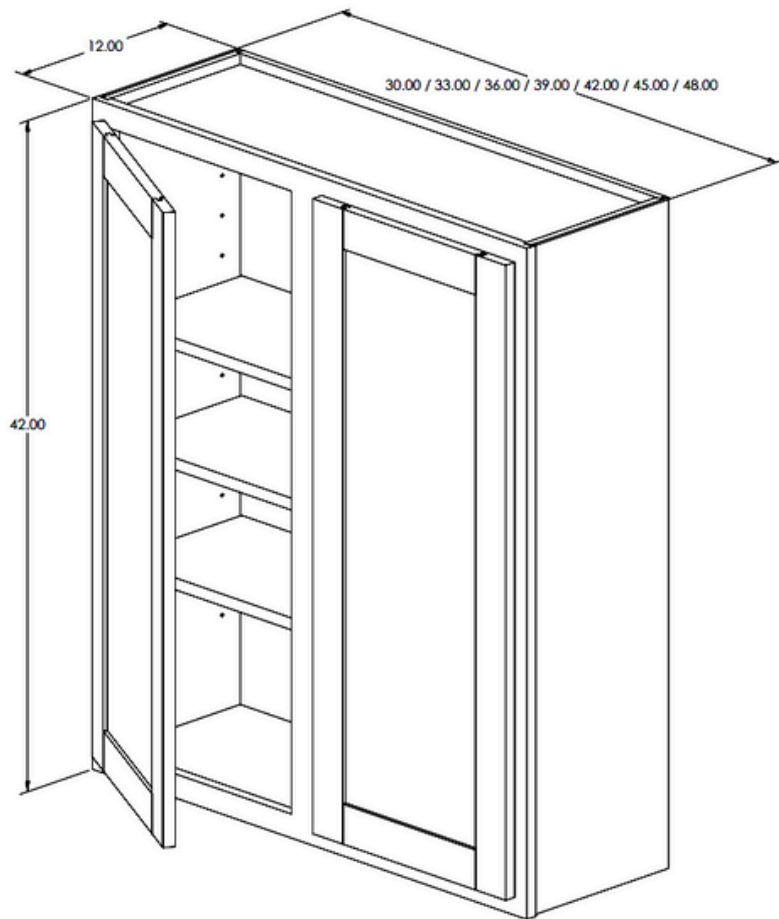
Double Door
30" Height

ITEM #
W303015



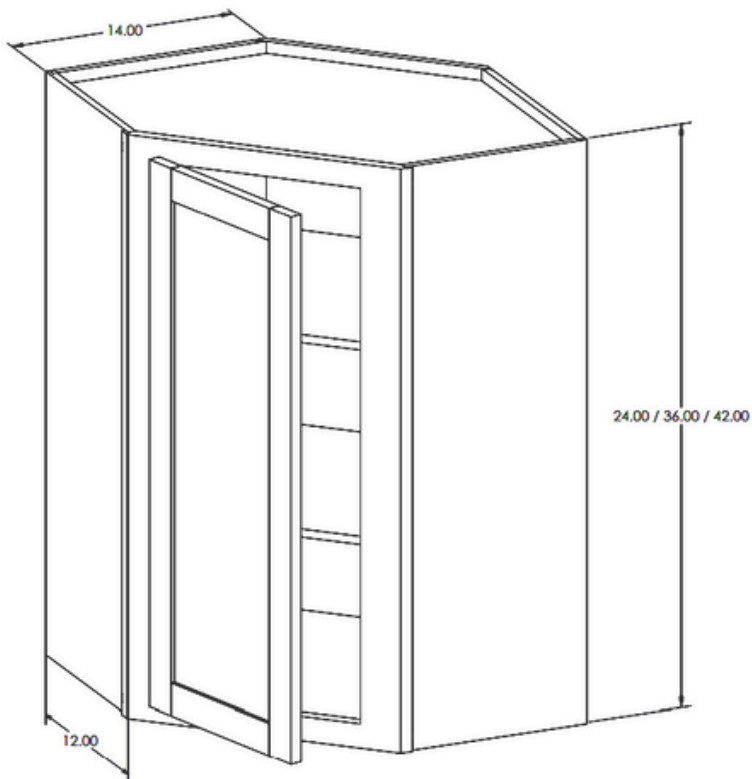
Double Door
36" Height

ITEM #
W3036
W3336
W3636
W3936
W4236
W4536
W4836



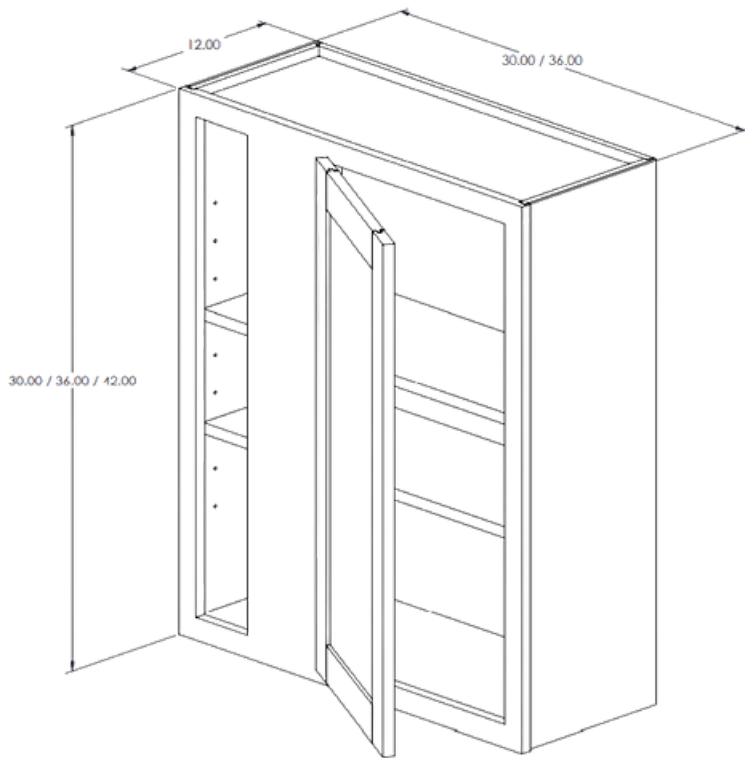
Double Door
42" Height

ITEM #
W3042
W3342
W3642
W3942
W4242
W4542
W4842



Diagonal Corner
24", 36", or 42" Height

ITEM #
DCW2430
DCW2436
DCW2442



Single Door

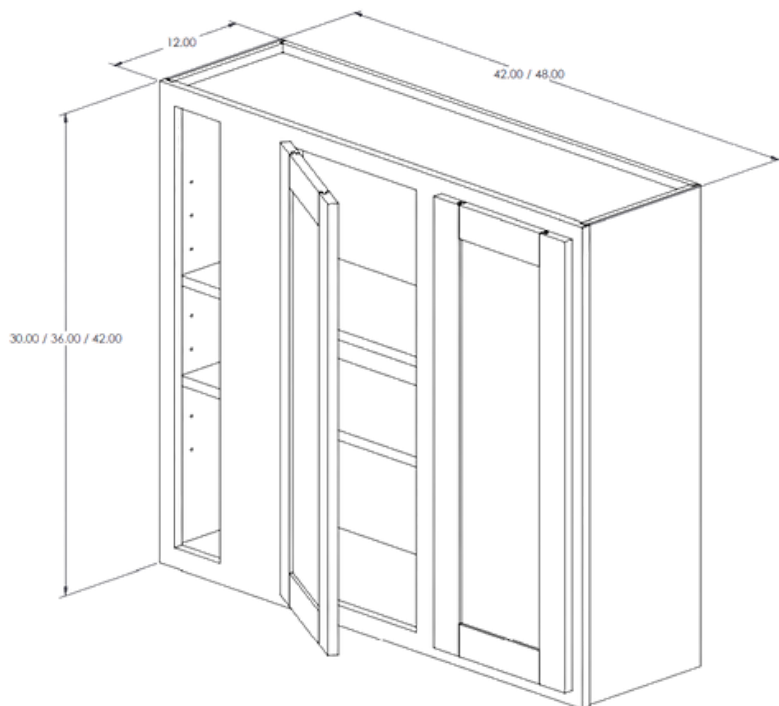
Blind Corner

30", 36" or 42" Height

30" or 36" Width

** Must specify left or right.

Item #	Cabinet Width	Distance From Wall		Door Drawer Front Width	Blind Corner
		1/2" Overlay Min	1/2" Overlay Max		
WBC3030	30	30"	36"	16" Single	Reversible
WBC3036	30	30"	36"	16" Single	Reversible
WBC3042	30	30"	36"	16" Single	Reversible
WBC3630	36	30"	36"	22" Single	Reversible
WBC3636	36	30"	36"	22" Single	Reversible
WBC3642	36	30"	36"	22" Single	Reversible



Double Door

Blind Corner

30", 36" or 42" Height

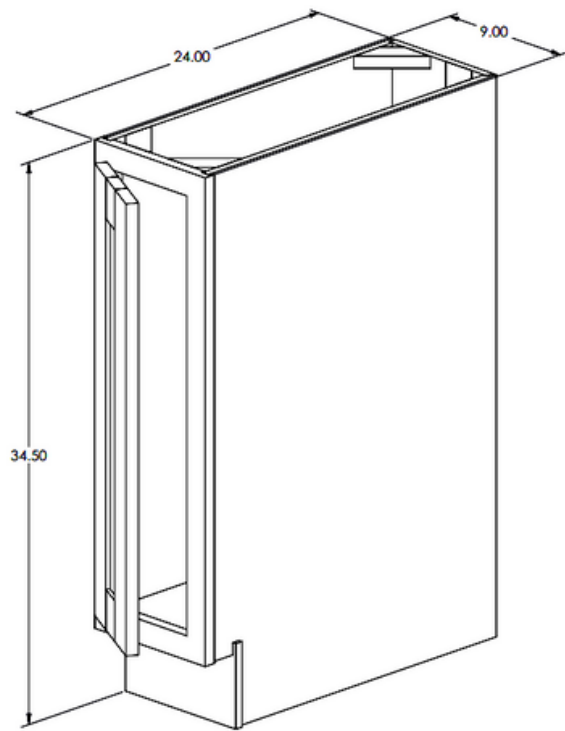
42" or 48" Width

** Must specify left or right.

Item #	Cabinet Width	Distance From Wall		Door Drawer Front Width	Blind Corner
		1/2" Overlay Min	1/2" Overlay Max		
WBC4230	42	42"	48"	13" 2 Doors	Reversible
WBC4236	42	42"	48"	13" 2 Doors	Reversible
WBC4242	42	42"	48"	13" 2 Doors	Reversible
WBC4830	48	48"	54"	16" 2 Doors	Reversible
WBC4836	48	48"	54"	16" 2 Doors	Reversible
WBC4842	48	48"	54"	16" 2 Doors	Reversible

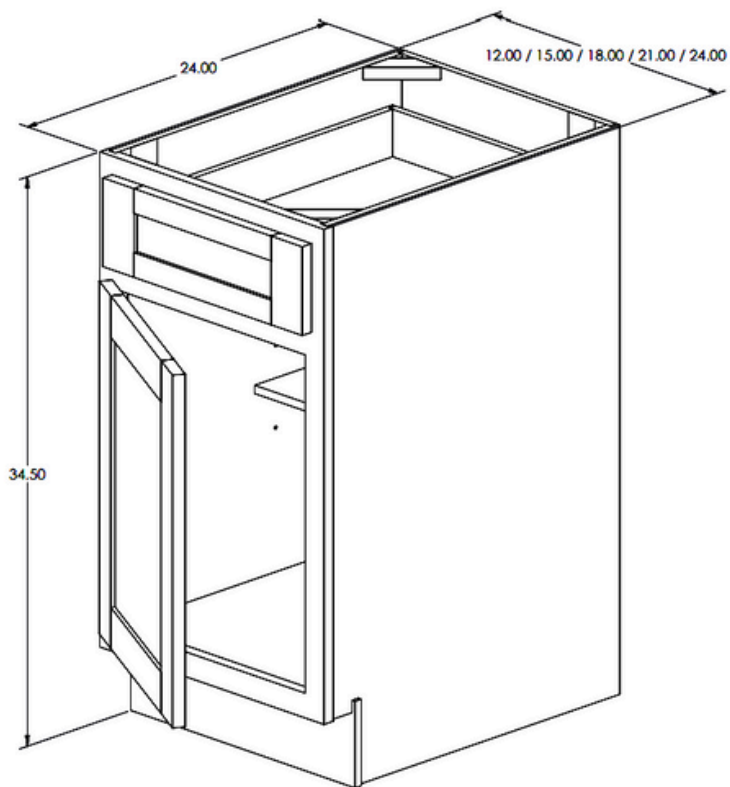
BASE CABINETS





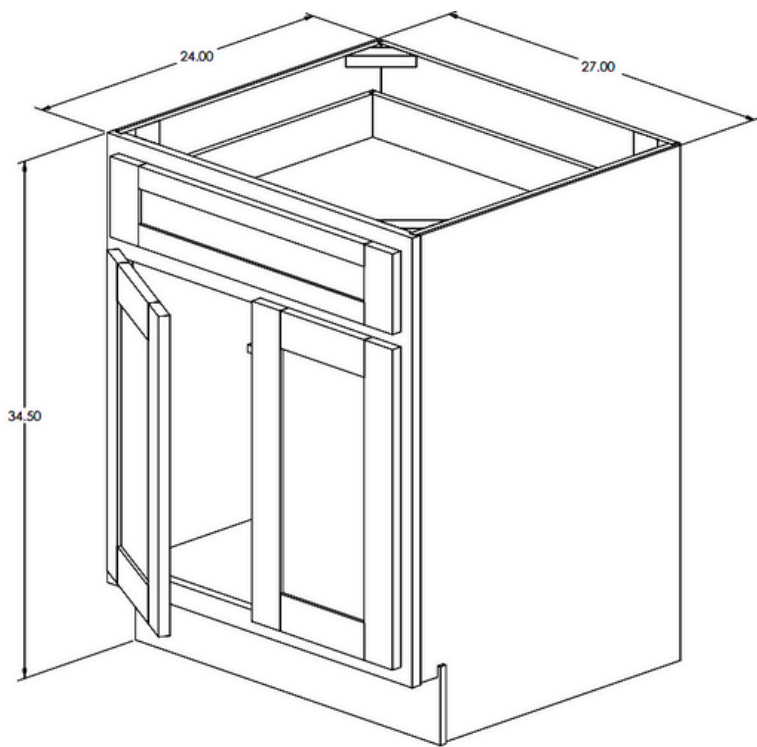
Full Height
Single Door
9" Width

ITEM #
B9FHD



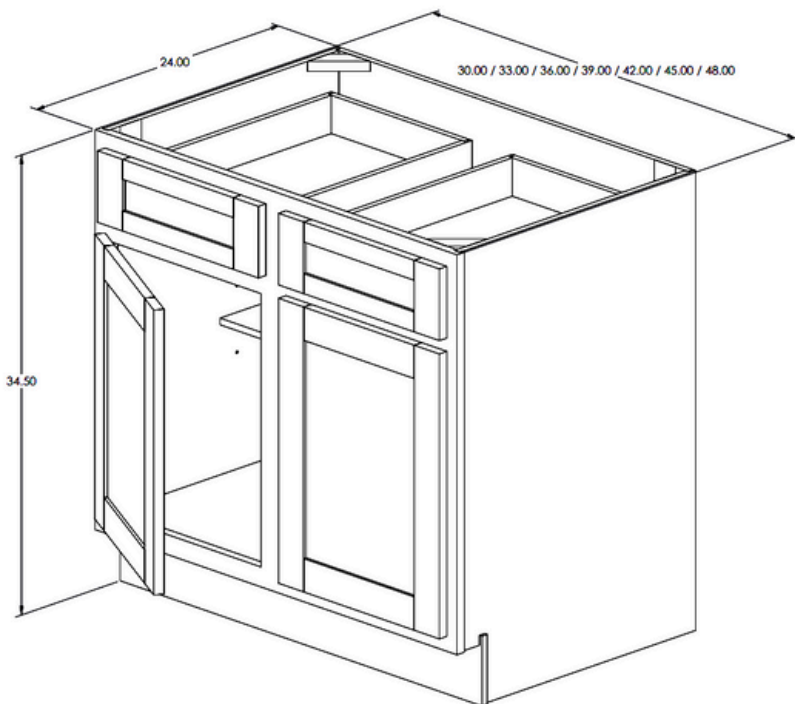
Single Door and Drawer
12", 15", 18", 21" or 24" Width

ITEM #
B12
B15
B18
B21
B24



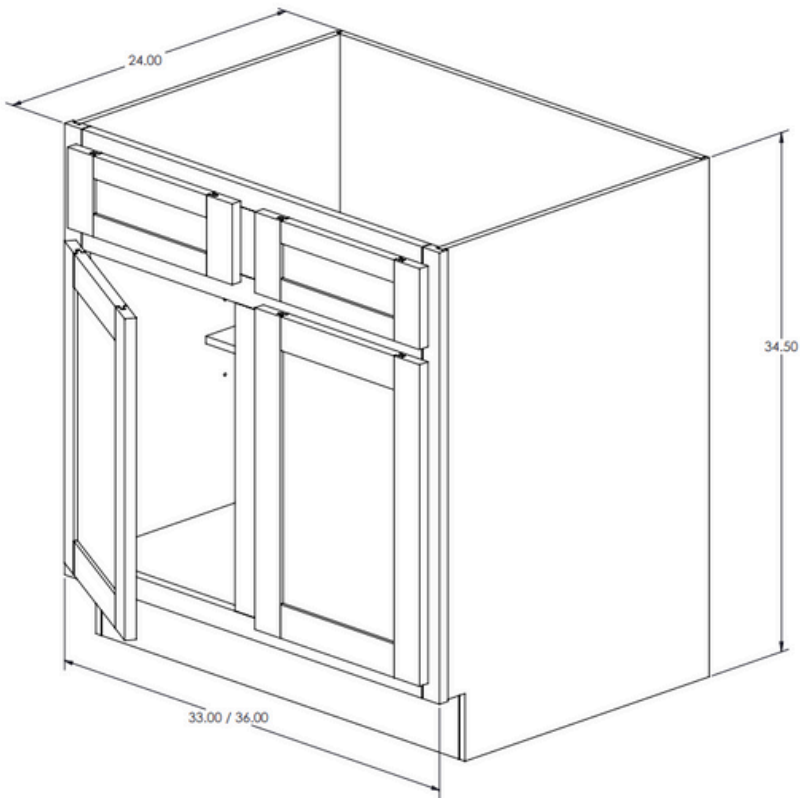
Butt Door and Single Drawer
27" Width

ITEM #
B27BD



Butt Door and Double Drawer
30", 33", 36", 39",
42", 45" or 48" Width

ITEM #
B30
B33
B36
B39
B42
B45
B48

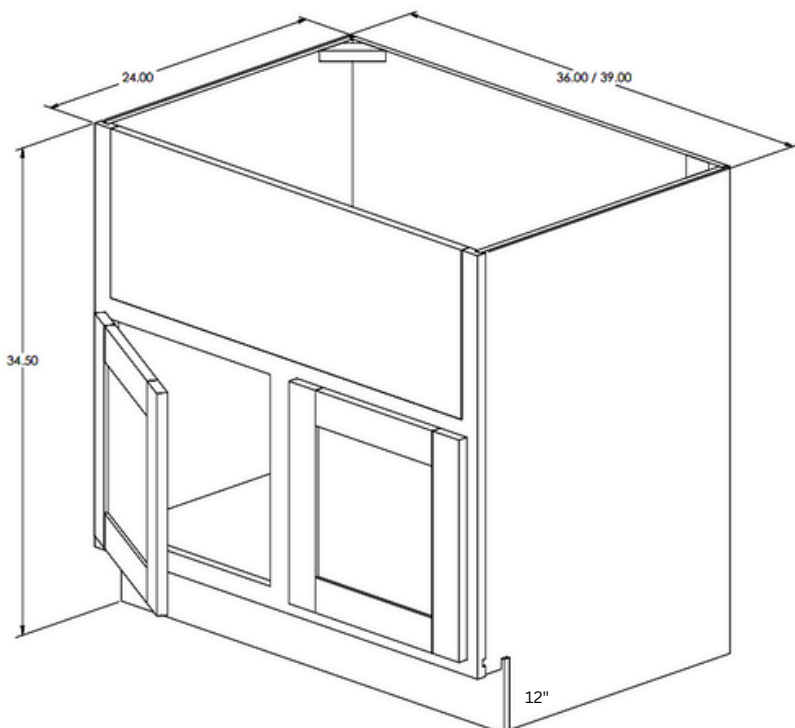


Sink Base Double Door
33" or 36" Width

ITEM #

SB33

SB36

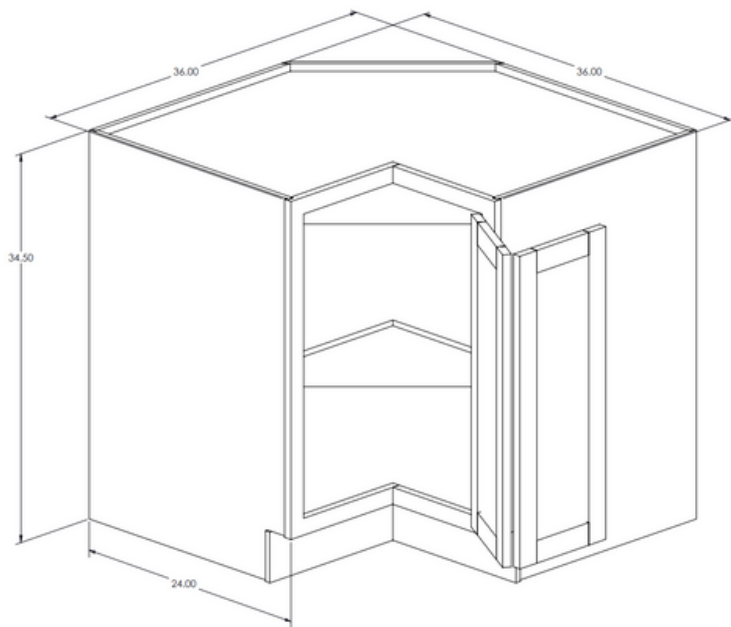


Farmhouse Sink Base Double Door
36" or 39" Width

ITEM #

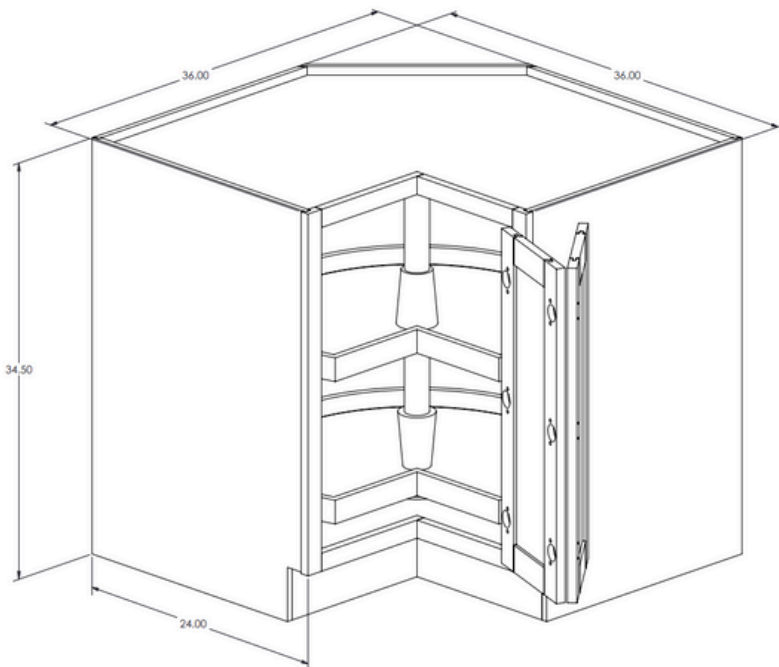
FSB36

FSB39



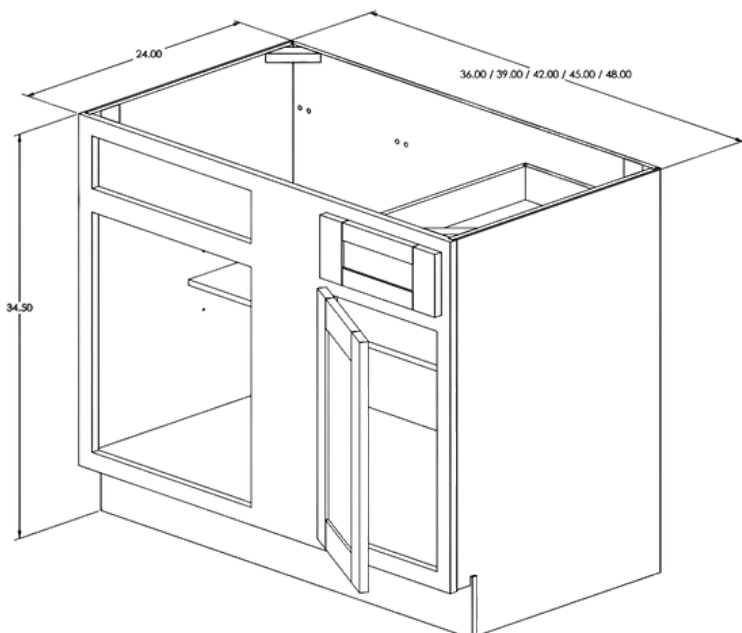
Base Corner Cabinet
36" Width

ITEM #
CB36



Base Corner Cabinet
36" Width
Lazy Susan Insert Installed

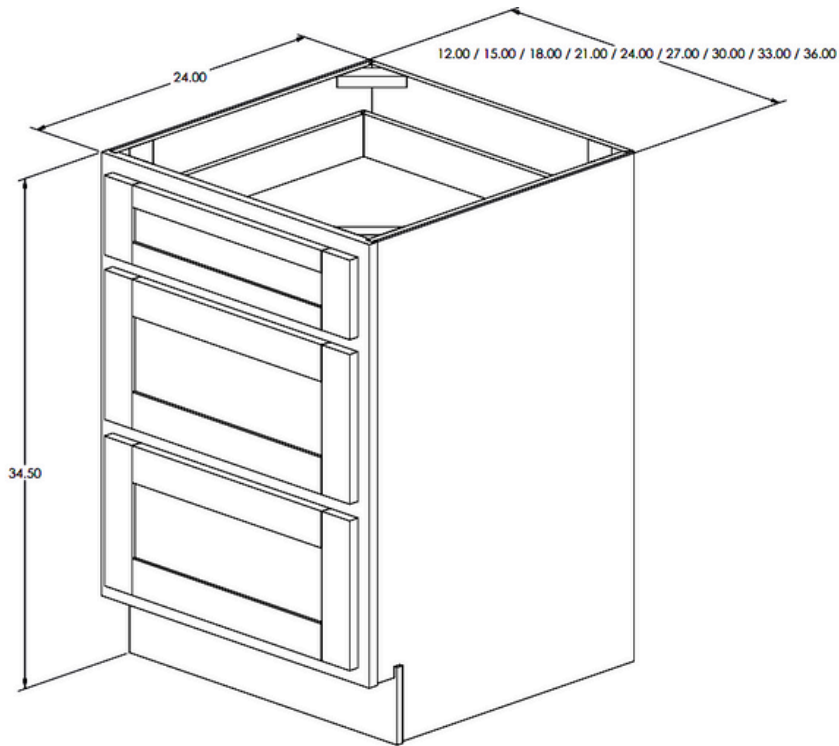
ITEM #
LSCB36



Blind Base Cabinet

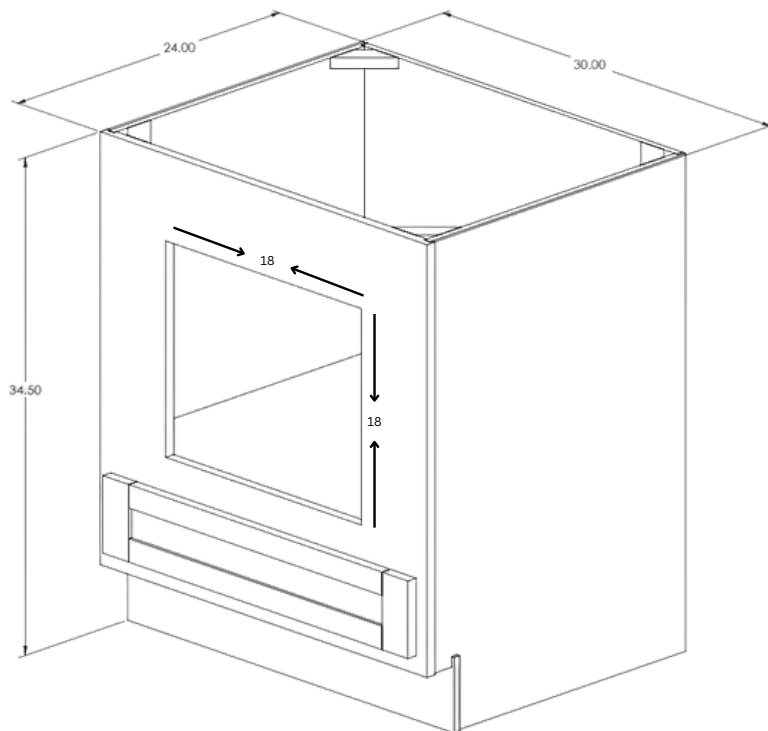
** Must specify left or right.

Item #	Cabinet Width	Distance From Wall		Door Drawer Front Width		Blind Corner
		1/2" Overlay Min	1/2" Overlay Max	1/2" Overlay		
BBC36	36	39 1/2"	44 1/2"	13"		Reversible
BBC39	39	39"	43 1/2"	10"		BL or BR
BBC42	42	42"	46 1/2"	13"		BL or BR
BBC45	45	45"	49 1/2"	16"		BL or BR
BBC48	48	48"	52 1/2"	18"		Reversible



Triple Drawer
12", 15", 18", 21", 24", 27",
30", 33" or 36" Width

ITEM #
3DB12
3DB15
3DB18
3DB21
3DB24
3DB27
3DB30
3DB33
3DB36

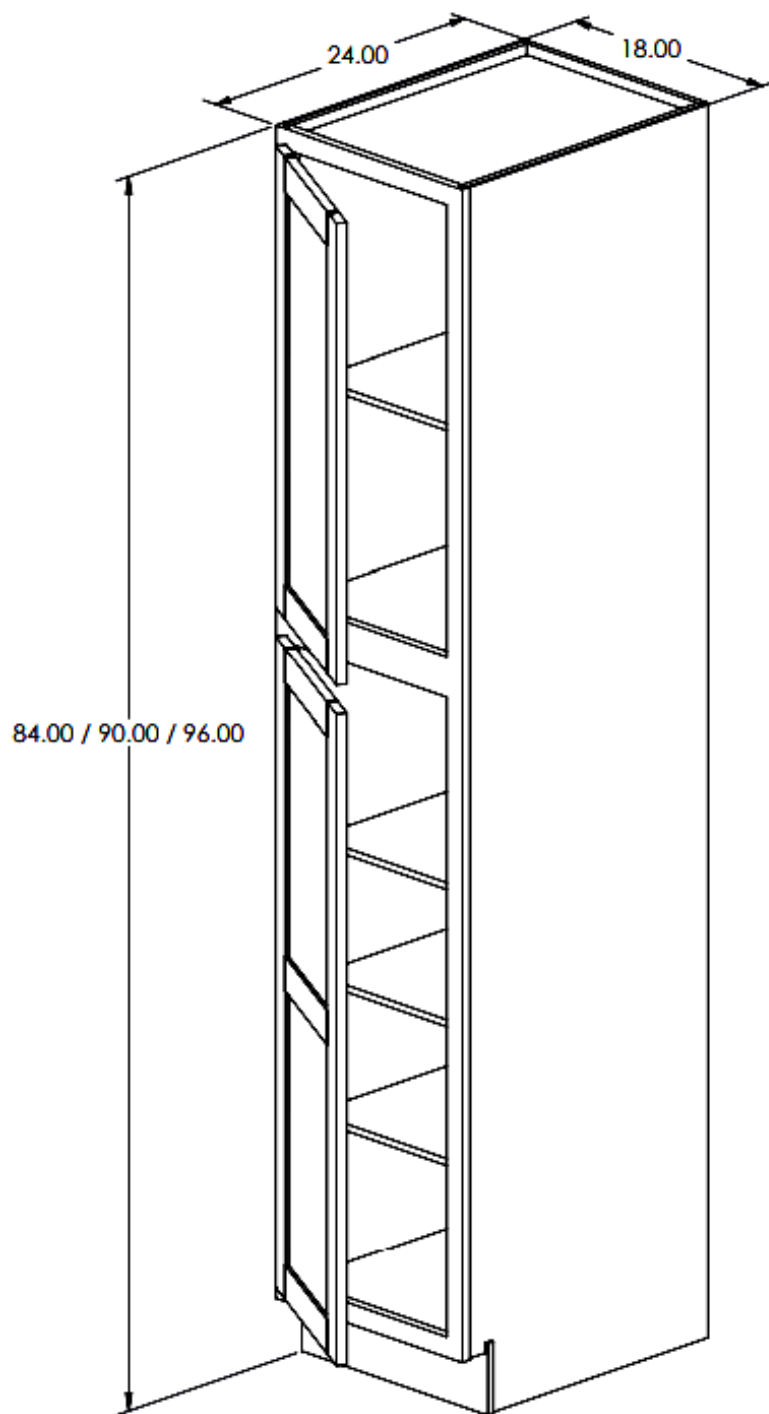


Microwave Base Cabinet
with Drawer 30" Width
18" x 18" Opening

ITEM #
BMC30

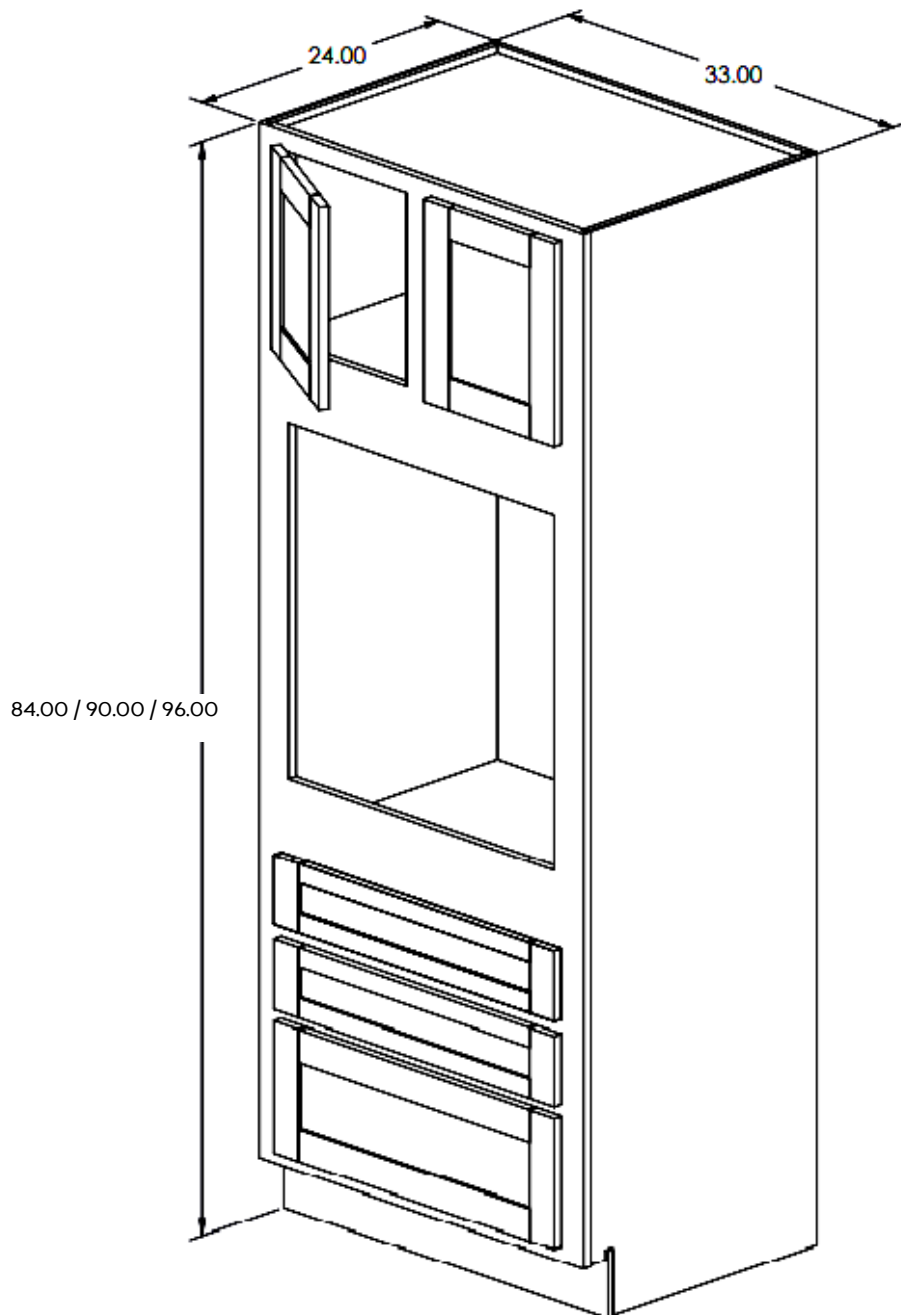
TALL CABINETS





Utility/Pantry with Shelves
Single Door
84" or 90" Height (4 shelves)
96" Height (5 shelves)

ITEM #
U188424
U189024
U189624

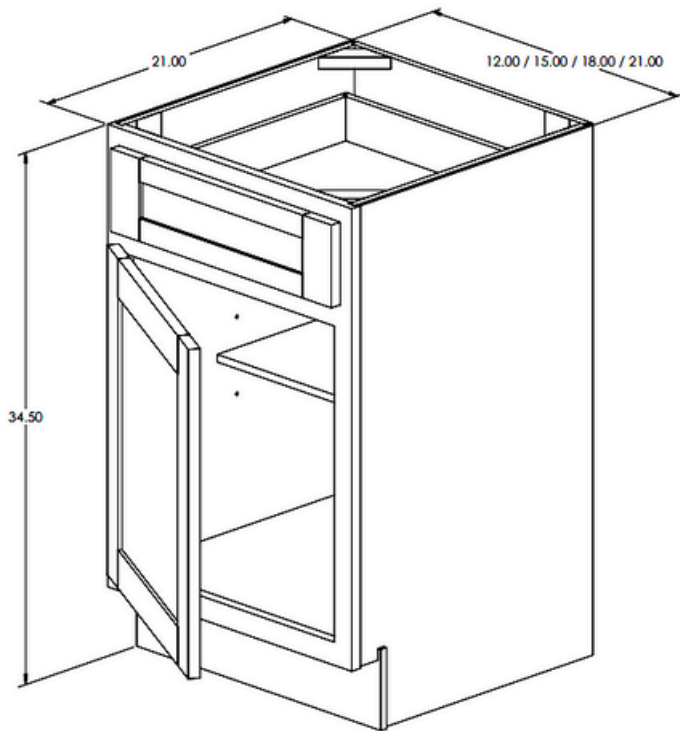


Oven Double Door w/ Triple Drawer
84", 90" or 96" Height

ITEM #
O338424
O339024
O339624

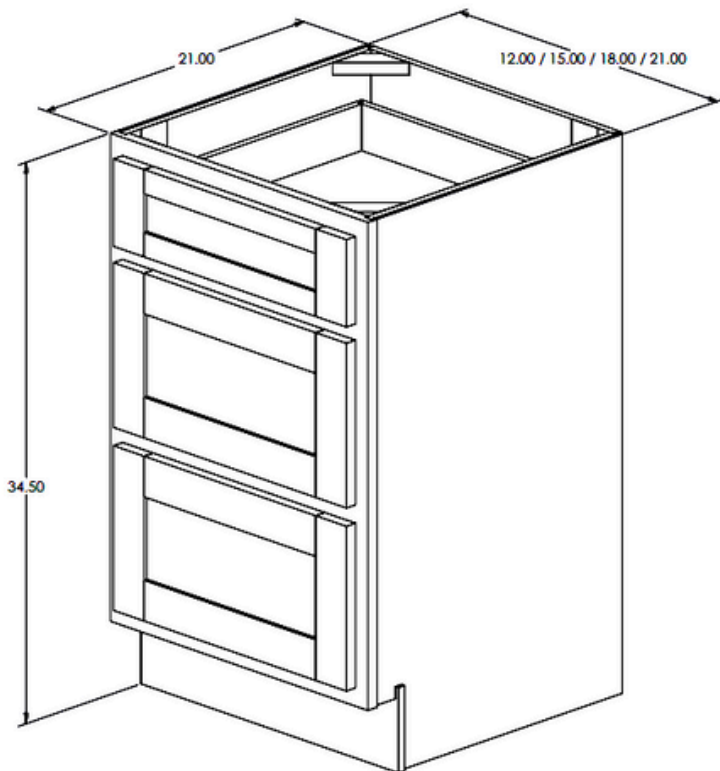
VANITY CABINETS





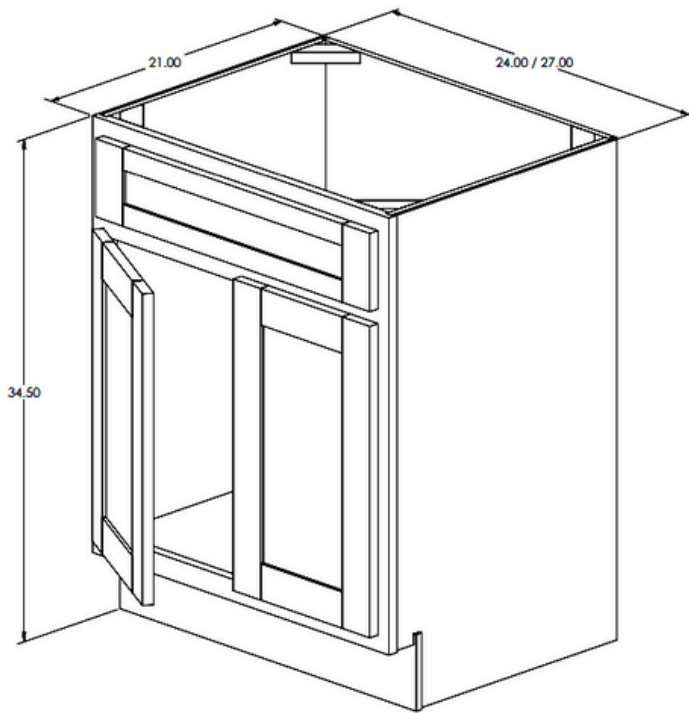
Single Door and Drawer 12" Width

ITEM #
VB12
VB15
VB18
VB21



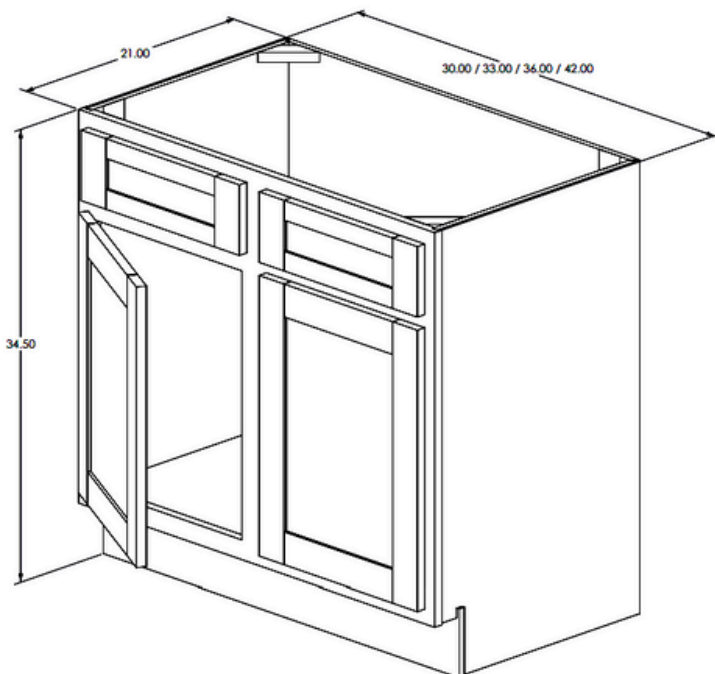
Triple Drawer 12", 15", 18", or 21" Width

ITEM #
3VDB12
3VDB15
3VDB18
3VDB21



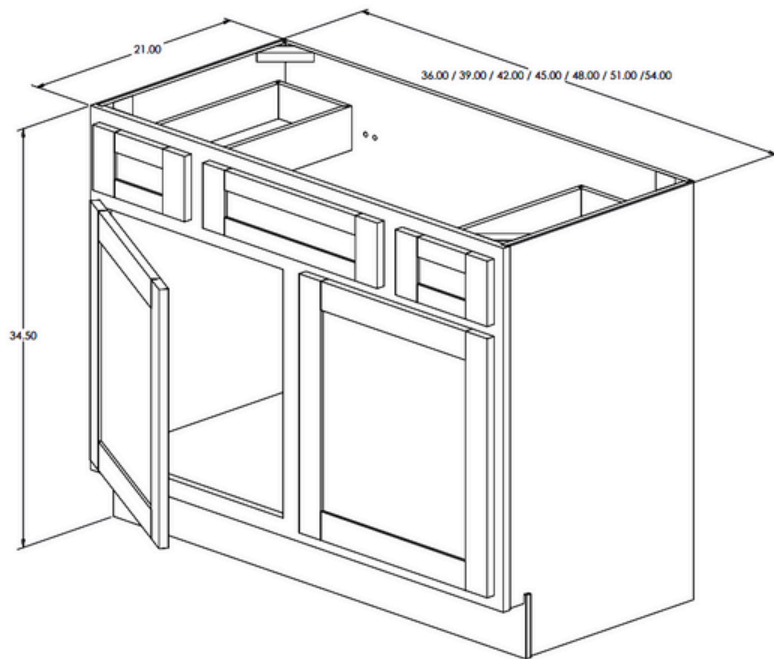
Double Door
Single Drawer
24" or 27" Width

ITEM #
VS24BD
VS27BD



Double Door
30", 33", 36" or 42" Width

ITEM #
VS30
VS33
VS36
VS42



Double Door Vanity 2 Drawer Sink Base 36", 39", 42", 45", 48", 51" or 54" Width

ITEM

VSD36

19" center vanity opening

VSD39

VSD42

VSD45

VSD48

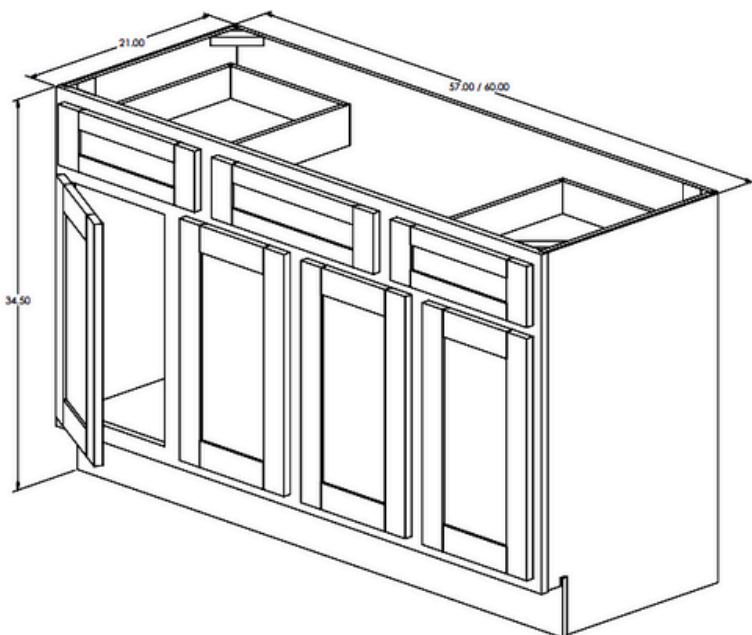
VSD51

VSD54

21" center vanity opening

Note:

- VSD36 and VSD39 - Side drawers are too narrow for pull bar.
- VSD36 and VSD39 - Undermount Soft Close is not available.



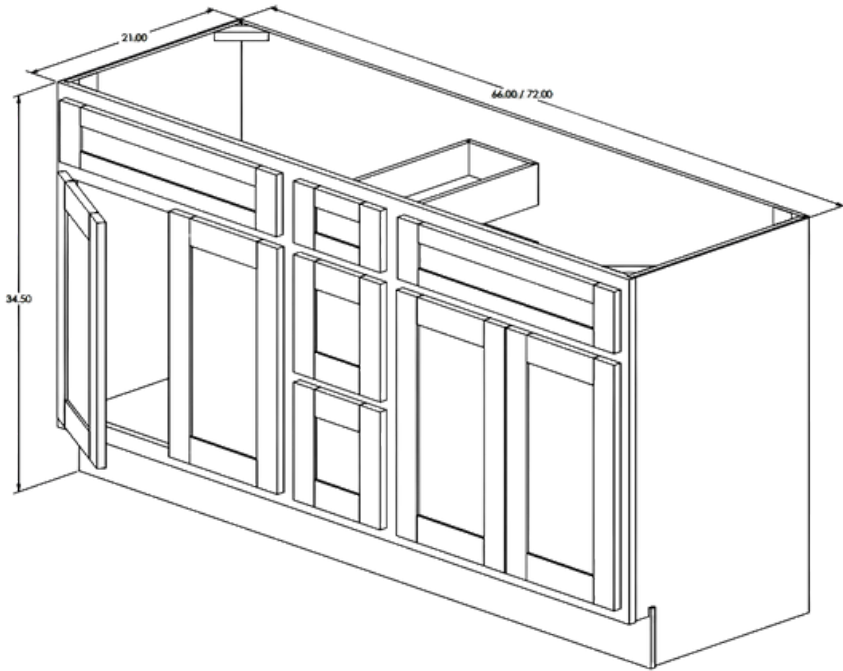
Two Double Door and Double Drawer 57" or 60" Width

ITEM

VSD57

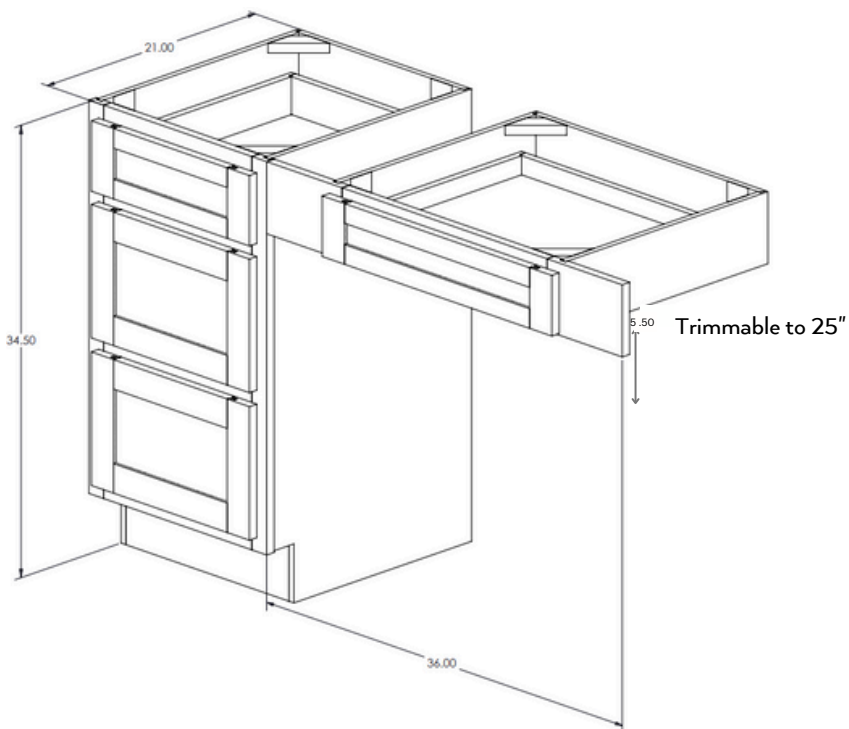
VSD60

21" center vanity opening



Two Double Door and
Triple Drawer
66" or 72" Width

ITEM #
VSD66
VSD72



Vanity Knee Drawer
5 Piece Drawer Front
*Can be trimmed to 25" wide

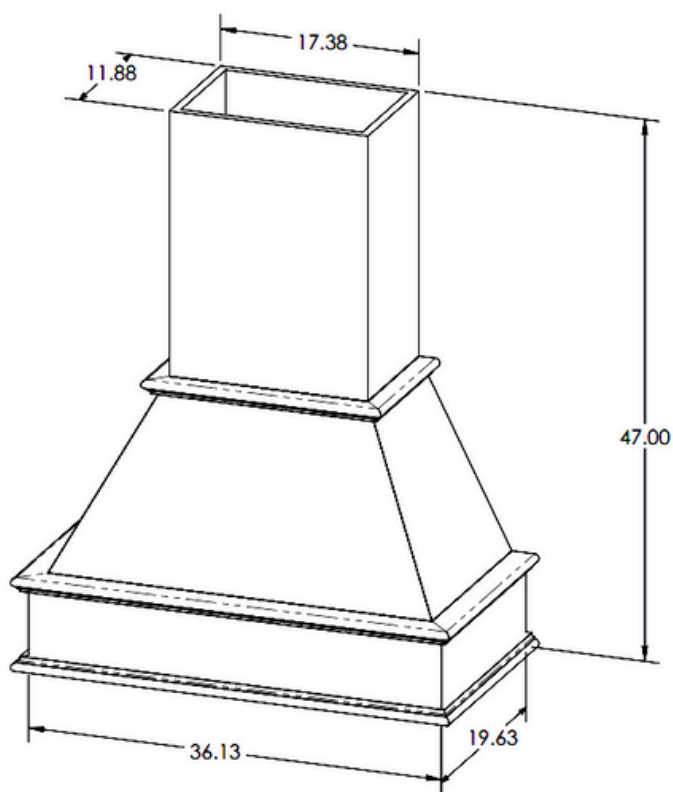
ITEM #
VKD36

Note:
• Undermount Soft Close is not available.

ACCESSORIES

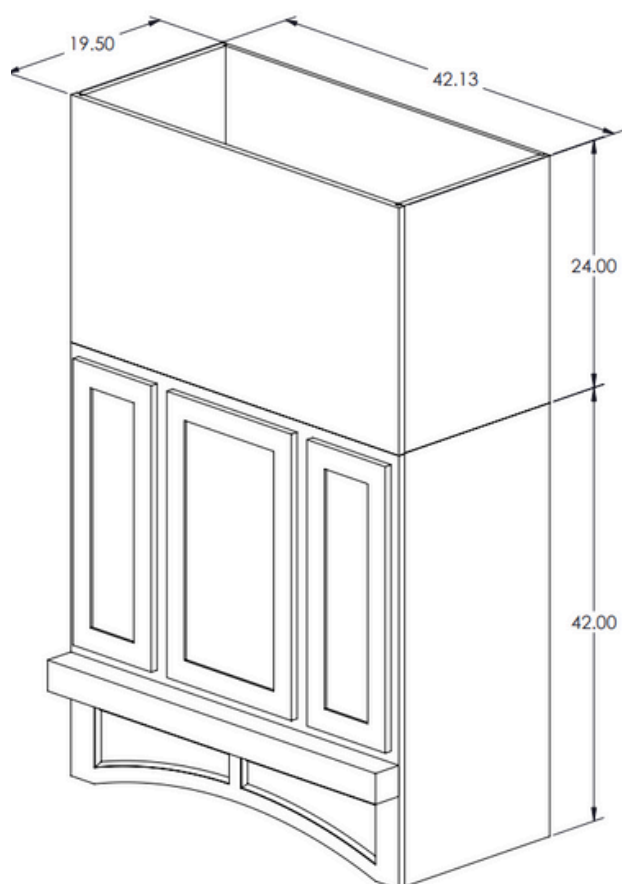


Range Hoods



Free Standing
Available in all finishes.
Includes 24" tall chase.
Blowers and lines sold separately.

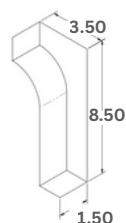
ITEM #
HOOD36



Mantle Style With Riser
Available in all finishes.
Corbel included with hood.
Blowers and liners sold separately.

ITEM #
HOOD42MANTLE

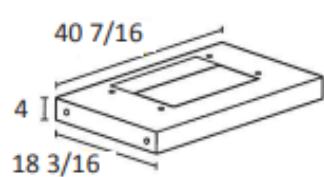
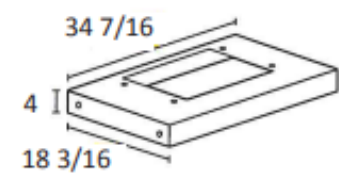
2 EA W1230 Doors - 10" x 27 3/4"
1 EA W1830 Door - 16" x 27 3/4"



Accessories

Liners

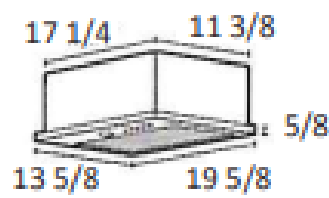
Must be purchased separately.



ITEM #
SM36
SM42

Blowers

Must be purchased separately.

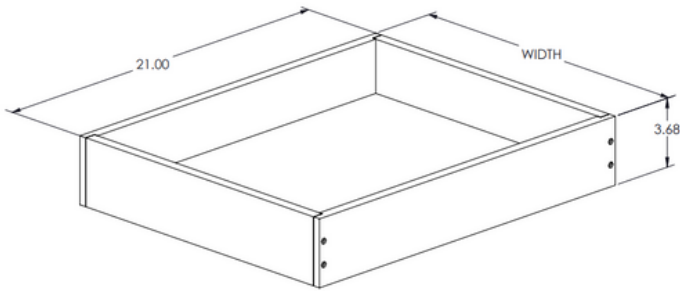


ITEM #
BUFO2A

Accessories

Roll Out Tray

CONSTRUCTED OF PLYWOOD



ITEM #
ROLLOUT

Can be added to the following:

- | | |
|-----|-----|
| B12 | B27 |
| B15 | B33 |
| B18 | B39 |
| B21 | B45 |
| B24 | |

Waste Bin



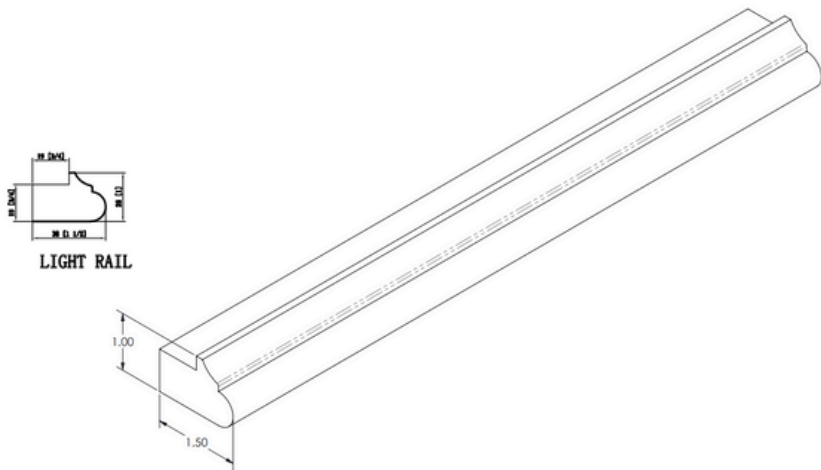
ITEM #
CH-TC-4WCTM-18DM2-25

Base Waste Bin
For Item B18 only.
2-35 Qt. Bins

Moulding

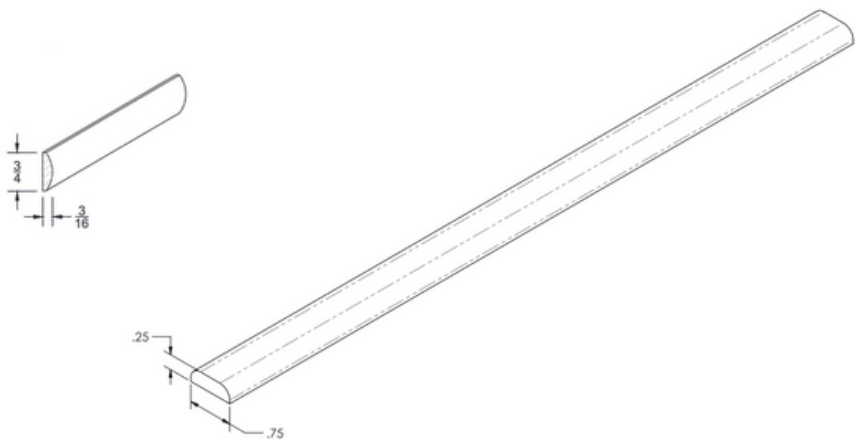
Your cabinet package won't be complete without polishing it off with moulding. Century Cabinets provides a variety of finished moulding options to choose from. From light moulding to crown moulding to decorative and utility mouldings, you can accentuate your cabinets in style.

LIGHT RAIL Length 8 ft.

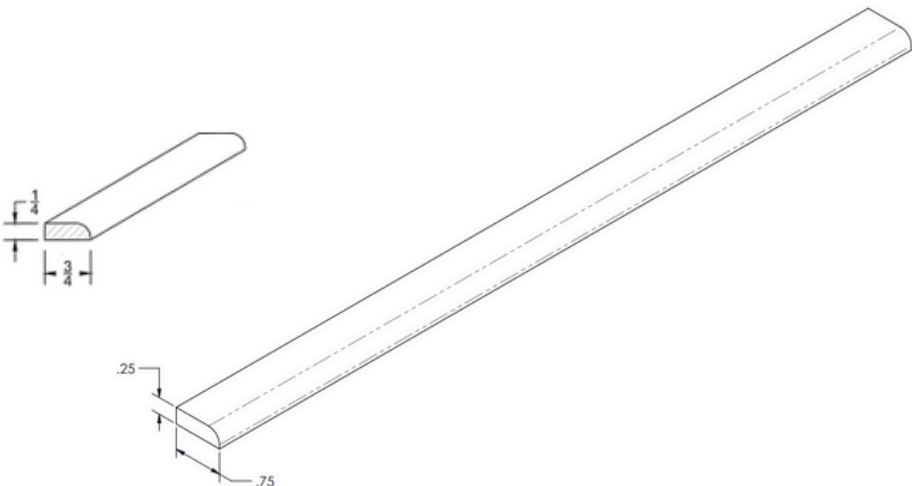


ITEM #
LTRL

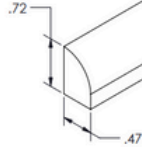
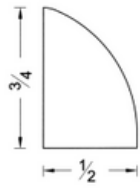
FINISH MOULDINGS Length 8 ft.



Batten
ITEM #
BAM

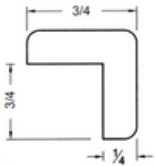


Scribe
ITEM #
SCR



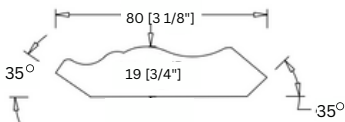
Shoe

ITEM #
SHOE



Outside Corner

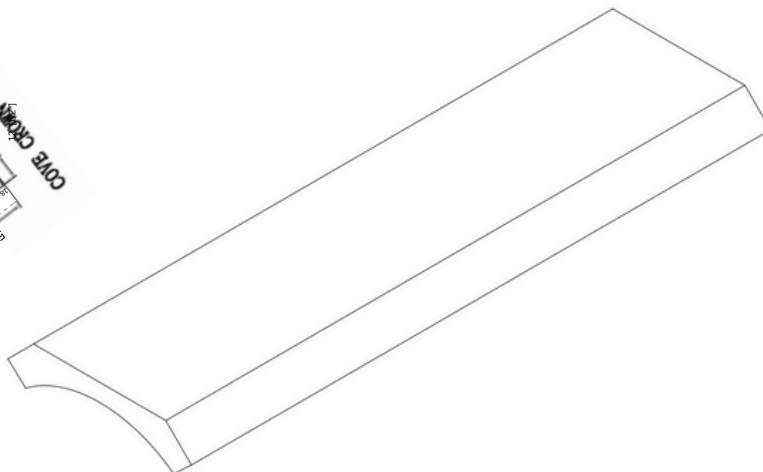
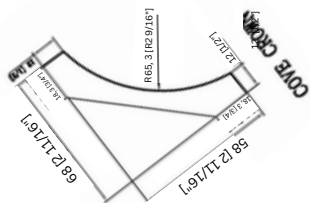
ITEM #
OCM



Crown Moulding

Available in all finishes.

ITEM #
CMS-TR

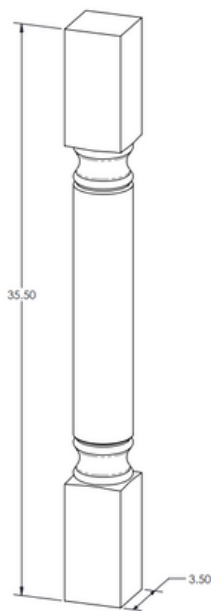


Cove Moulding

Available in all finishes.

ITEM #
CMS-CV

Design Elements

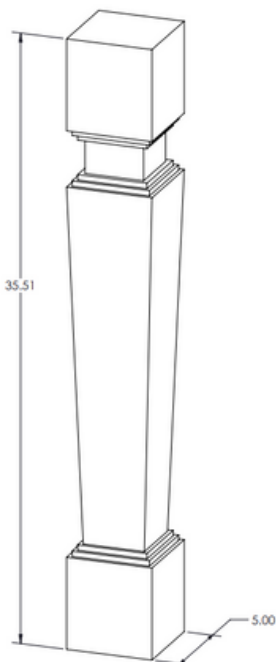


Decorative Post 3 1/2"

Available in all finishes.

ITEM #

POST 3 1/2"

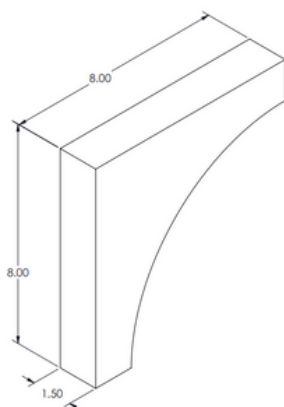


Decorative Post 5"

Available in all finishes.

ITEM #

POST 5"



Countertop Support Bracket

Available in all finishes.

ITEM #

CTSB

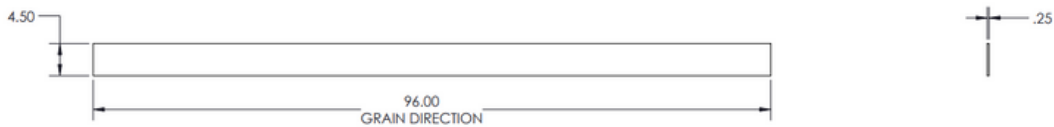
Panels - Veneer

Toe Kick Cover - Veneer

Available in all finishes.

ITEM #

TKC



Standard Panel - Veneer

Available in all finishes.

96"

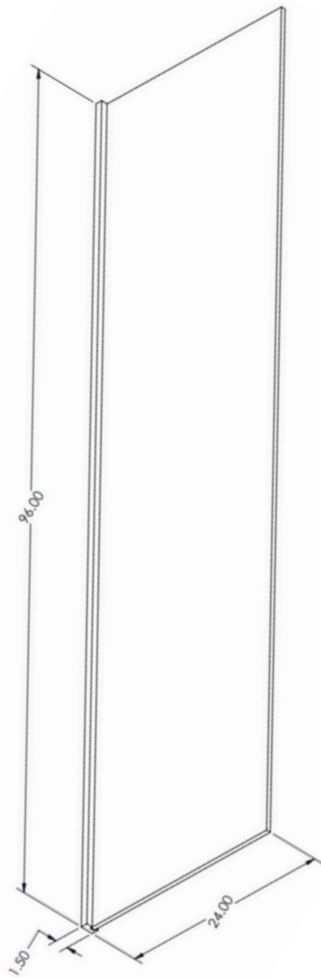
ITEM #

FPV4896



Refrigerator End Panel

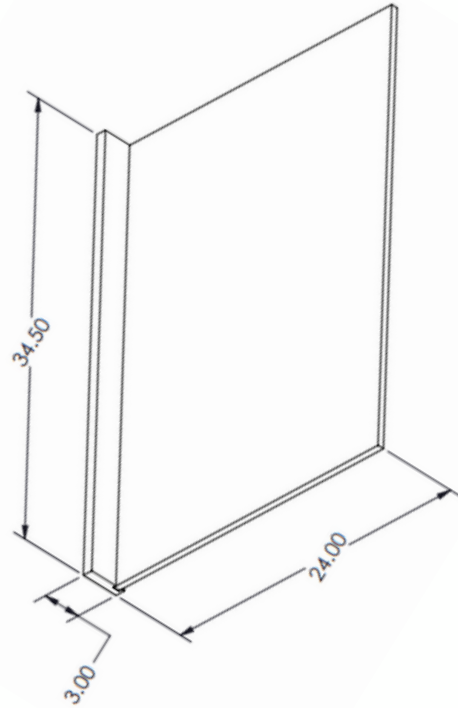
Available in all finishes.



ITEM #
REP2496

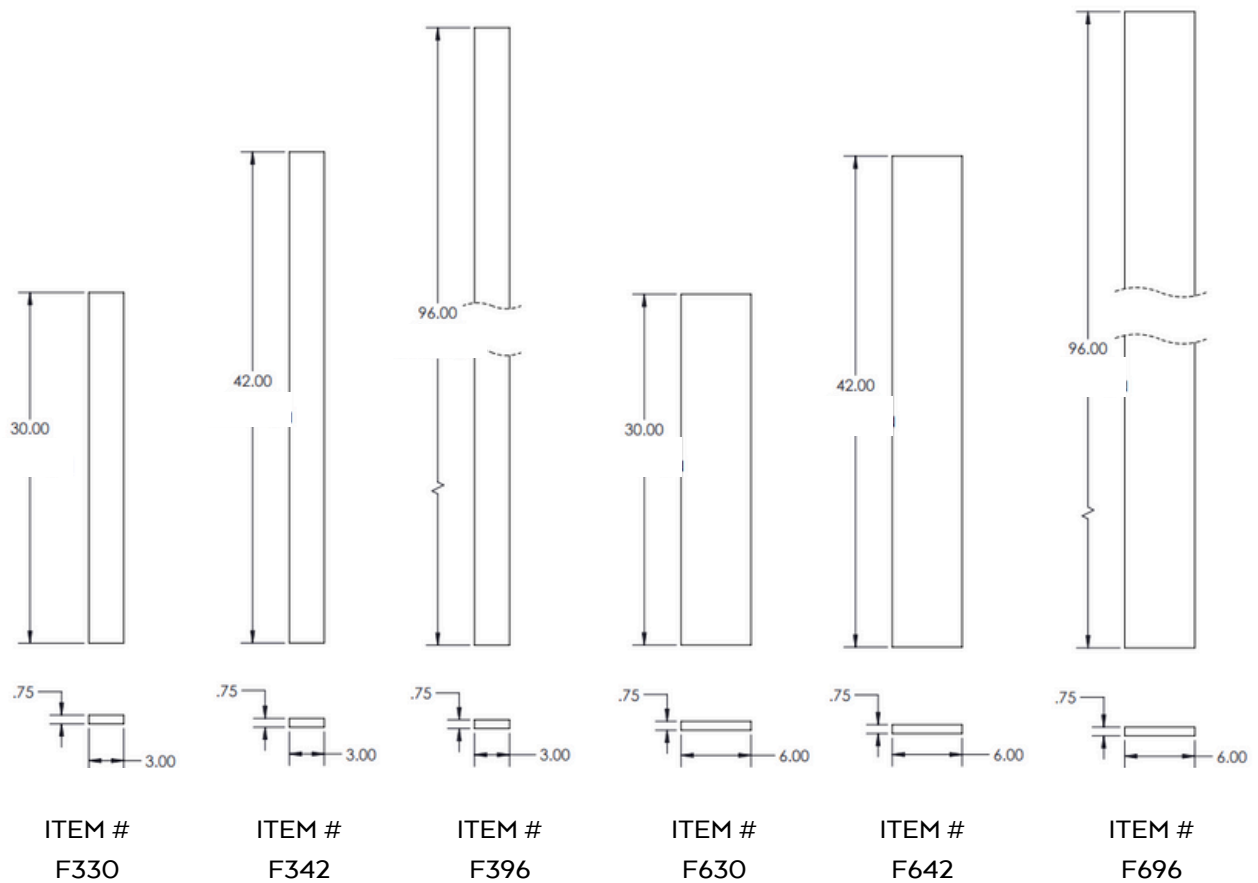
Dishwasher End Panel

Available in all finishes.



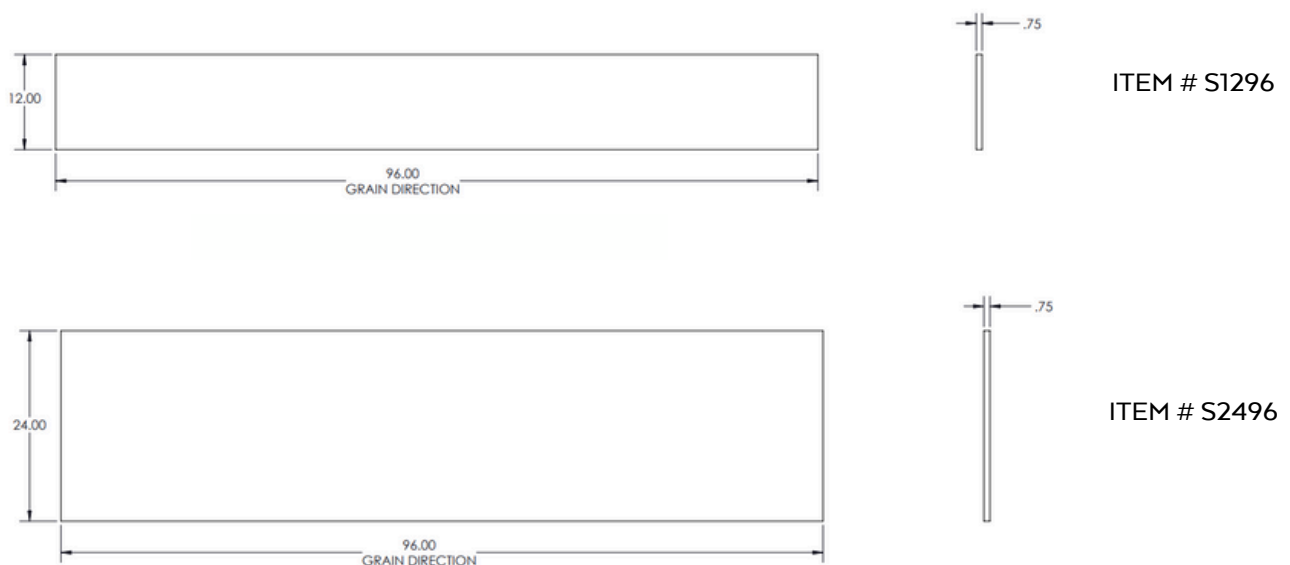
ITEM #
DWEF3

Fillers

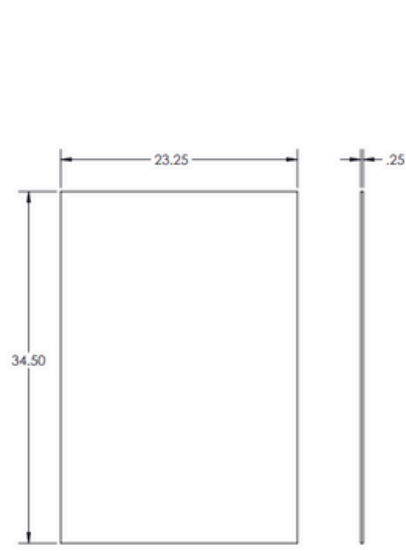


Shelving

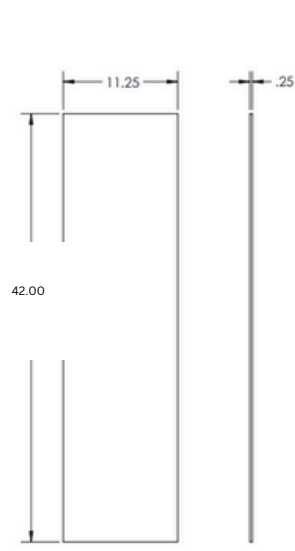
96" Length
12" or 24" Width
Panels are 5/8" TFL.



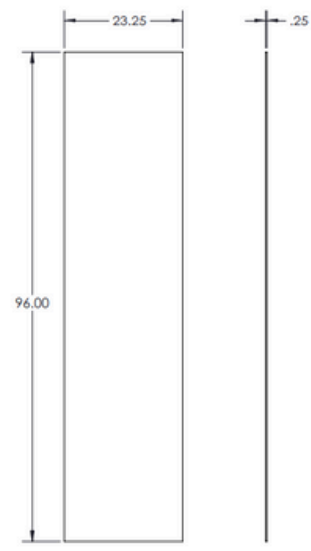
Skins - Veneer



ITEM # BSV



ITEM # WSV42



ITEM # USV2496

Touch Up

Kits (Each kit includes felt marker and putty stick.)

ITEM #

TUK-Century White

TUK-Century Gray

TUK-Licorice

TUK-Gale Force

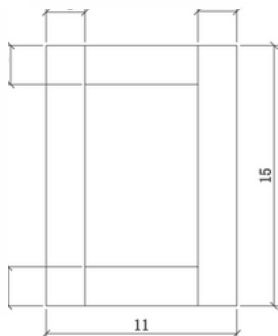
TUK-Sprout

TUK-Urbane Bronze

TUK-Chatroom

Sample Door

Order a sample door for your showroom.



ITEM #

SAMPLEDOOR -Century White

SAMPLEDOOR-Century Gray

SAMPLEDOOR-Licorice

SAMPLEDOOR-Gale Force

SAMPLEDOOR-Sprout

SAMPLEDOOR-Urbane Bronze

SAMPLEDOOR-Chatroom

Undermount Soft Close FXT

ITEM #

CDS UMSCB

Base

CDS UMSCV

Vanity

CABINET CARE

Cabinetry should be dusted or cleaned periodically like any wood furniture.

- Immediately clean up any spills, splatters, or water spots with a soft cloth.
- Avoid hanging wet towels over cabinet doors; water will damage the finish.
- Wipe cabinets with a pre-moistened or damp cloth. Follow the grain of the wood. Wiping across the grain can cause scratches.
- Mild detergents with warm water and wood polishes can be used for cleaning cabinets. If using a furniture care product, use polish and avoid silicone, wax, or ammonia products. Wipe dry after cleaning.



07

CENTURY CABINETS

TERMS & CONDITIONS

WARRANTY COVERAGE

Century cabinets are warranted to the original purchaser for one (1) year from the date of original purchase. Century Cabinets warrants to the original purchaser for a period of five (5) years that the door hinges and drawer guides shall be free from defects in material and workmanship under normal use.

WARRANTY PERFORMANCE

This warranty does not cover problems caused by improper installation of cabinets or added cabinetwork. This warranty does not cover any product used or installed in connection with cabinets such as appliances, countertops, plumbing fixtures or electrical fixtures. This warranty does not cover damage caused by transportation, storage or exposure to excessive temperatures or to defects resulting from misuse, neglect, accident, alteration or any improper use or care or failure to maintain cabinets. No dealer, retailer, sub-contractor, agent or employee of Century Cabinets has the authority to alter the obligations or limitations of Century Cabinets' warranty. This warranty is not transferable.

Wood characteristics naturally occurring such as variations in color, grain, mineral streaks and knots are not considered defects. Color variations in cabinets are a natural occurrence due to species, age, character, and exposure to sunlight. Painted products, glazed or rub-through products with normal aging will show uneven hang-up profile edges, rag marks, and glaze hang-up around natural characteristics in the wood. The patina will vary in severity within individual doors. Expansion and contraction due to climate changes in the painted wood surface will cause fractures in the paint surface at joints (stiles and rails). New and/or used cabinets may not match display samples and/or existing cabinets. Such variations are not considered defects. If a defect does occur, the defective part will be repaired or replaced by Century Cabinets at its sole discretion. WARRANTOR SHALL IN NO CASE BE LIABLE FOR CONSEQUENTIAL, INDIRECT OR INCIDENTAL DAMAGES RESULTING FROM THE USE, INSTALLATION, OR PERFORMANCE OR FAILURE OF ITS PRODUCTS.

Some states do not allow exclusion of limitation for incidental and consequential damages. Check with your state for your specific legal rights.

Warranty claims should be submitted to:

Century Cabinets

6025 Shiloh Rd

Alpharetta, GA 30005



QUESTIONS?

Century Cabinets
770.888.7345
www.centurycabinetsinc.com